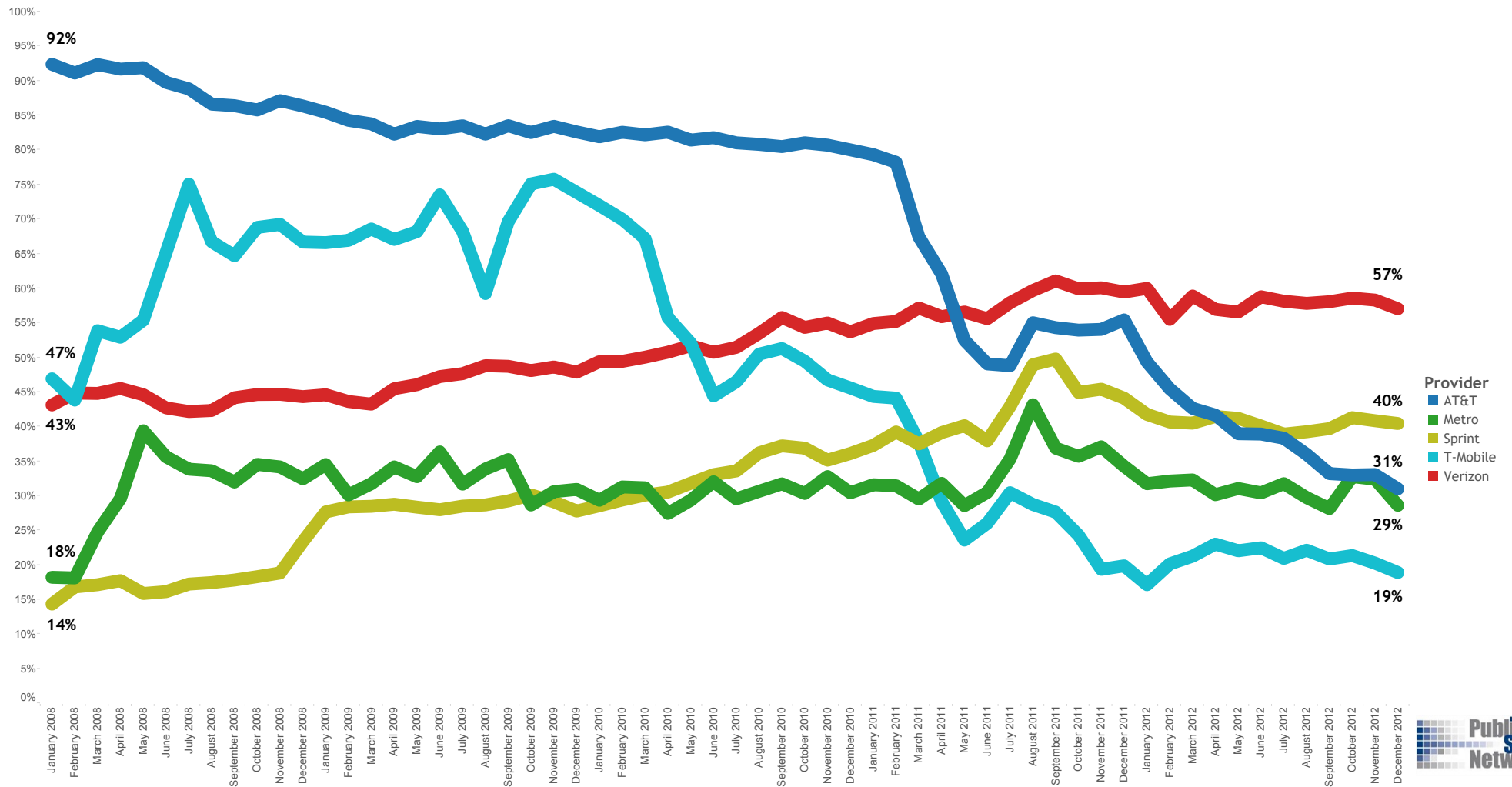
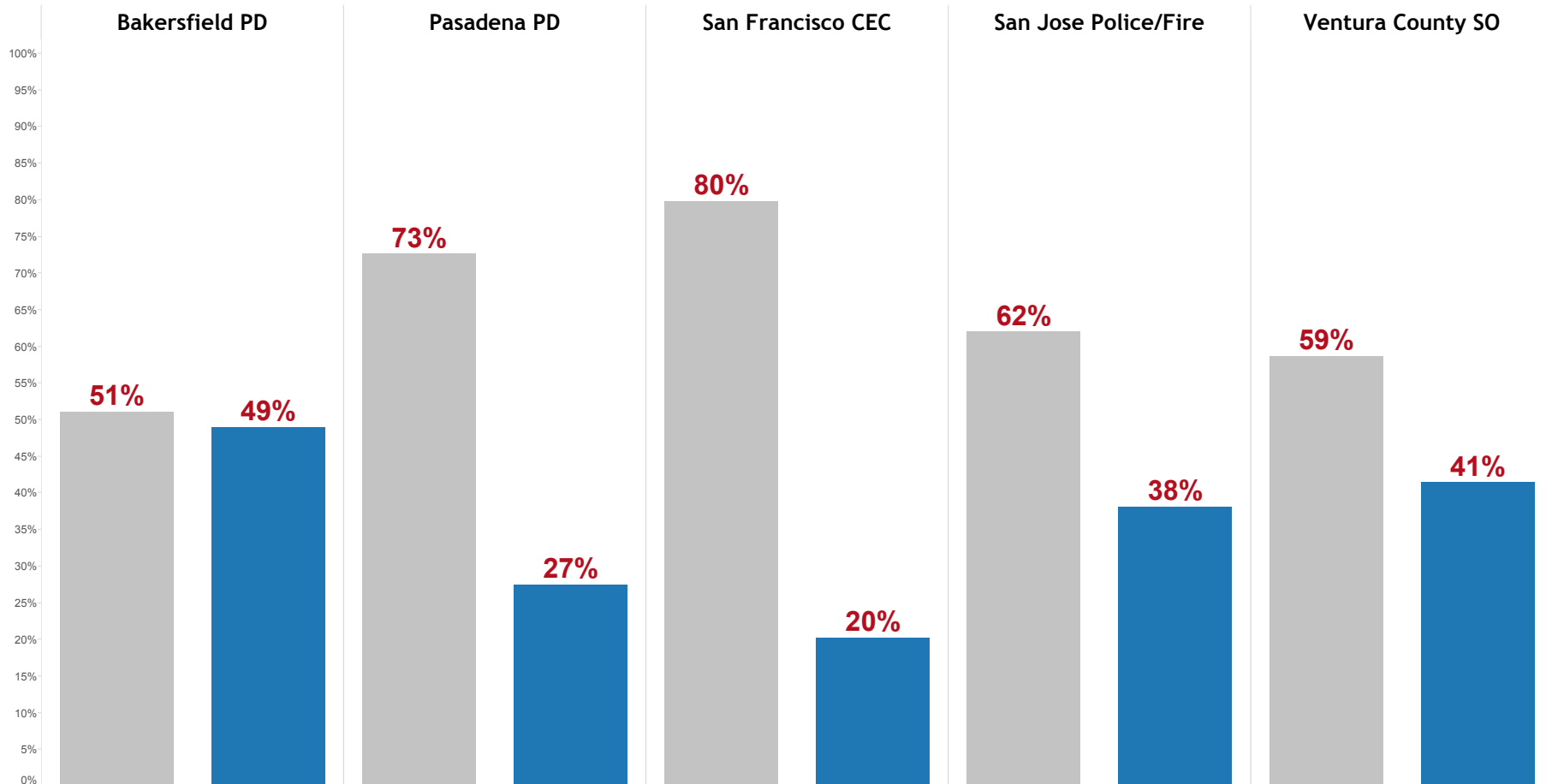


Phase II Percentage at Call Termination for All Wireless 9-1-1 Calls Slide 1.1
Bakersfield PD, Pasadena PD, San Francisco CEC, San Jose PD/FD, Ventura County SO



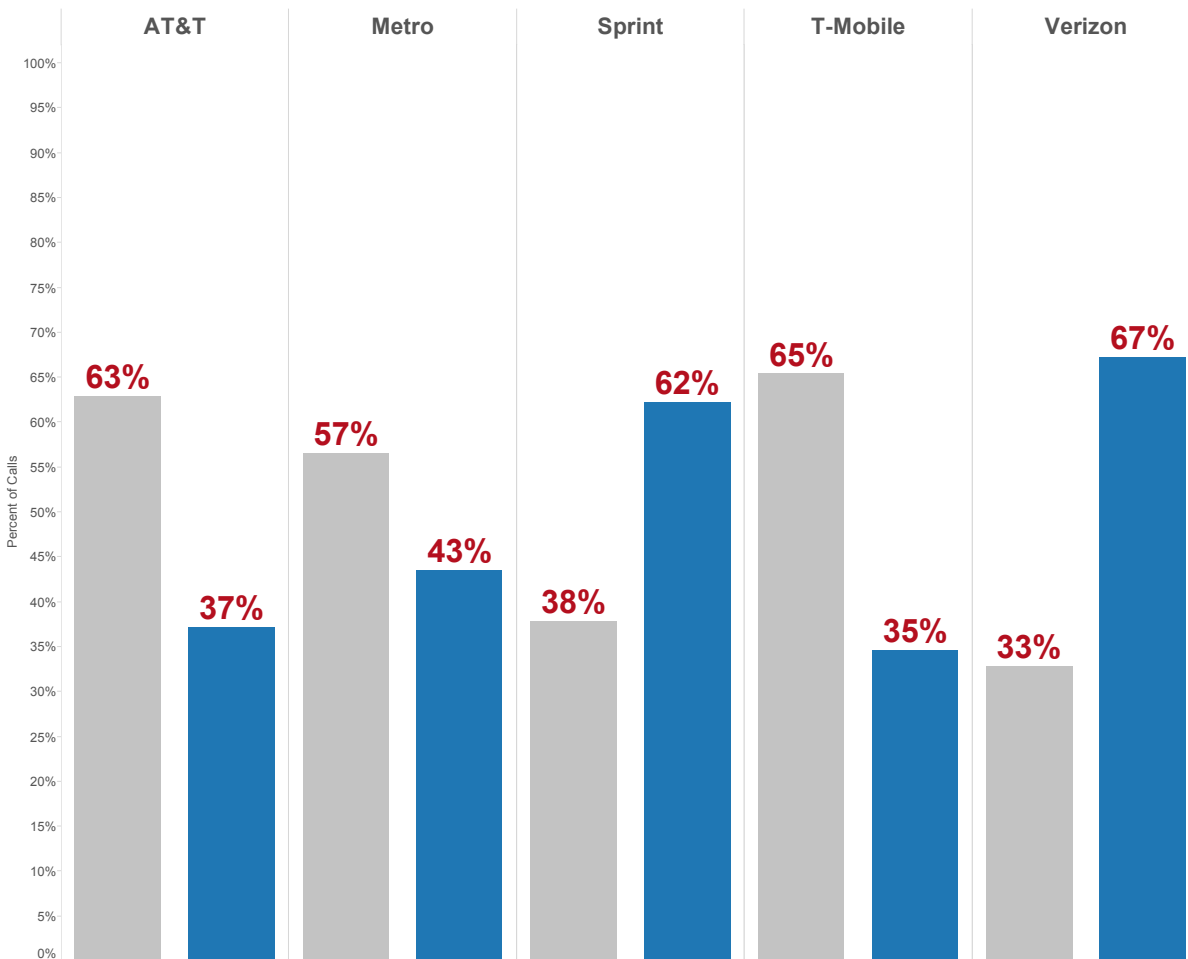
Phase at Call Termination for All Wireless 9-1-1 Calls Slide 1.2
December 2012

Location Yield
■ Phase I Calls
■ Phase II Calls

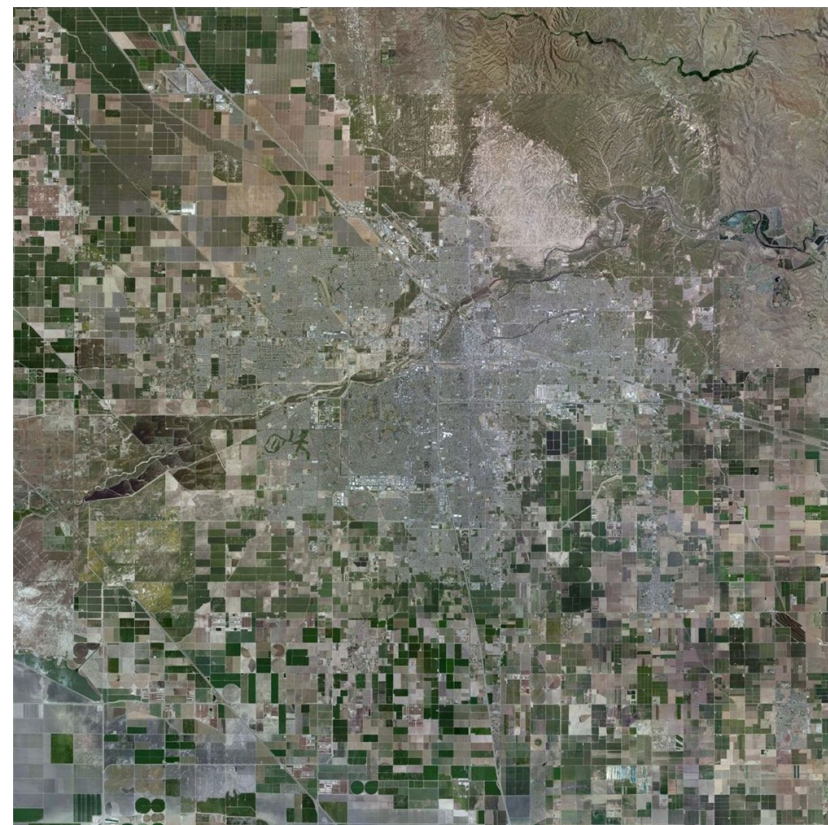


© 2013 Public Safety Network Reports generated with permission of PSAP representatives.

Phase at Call Termination for All Wireless 9-1-1 Calls Slide 2.1
Bakersfield PD - December 2012



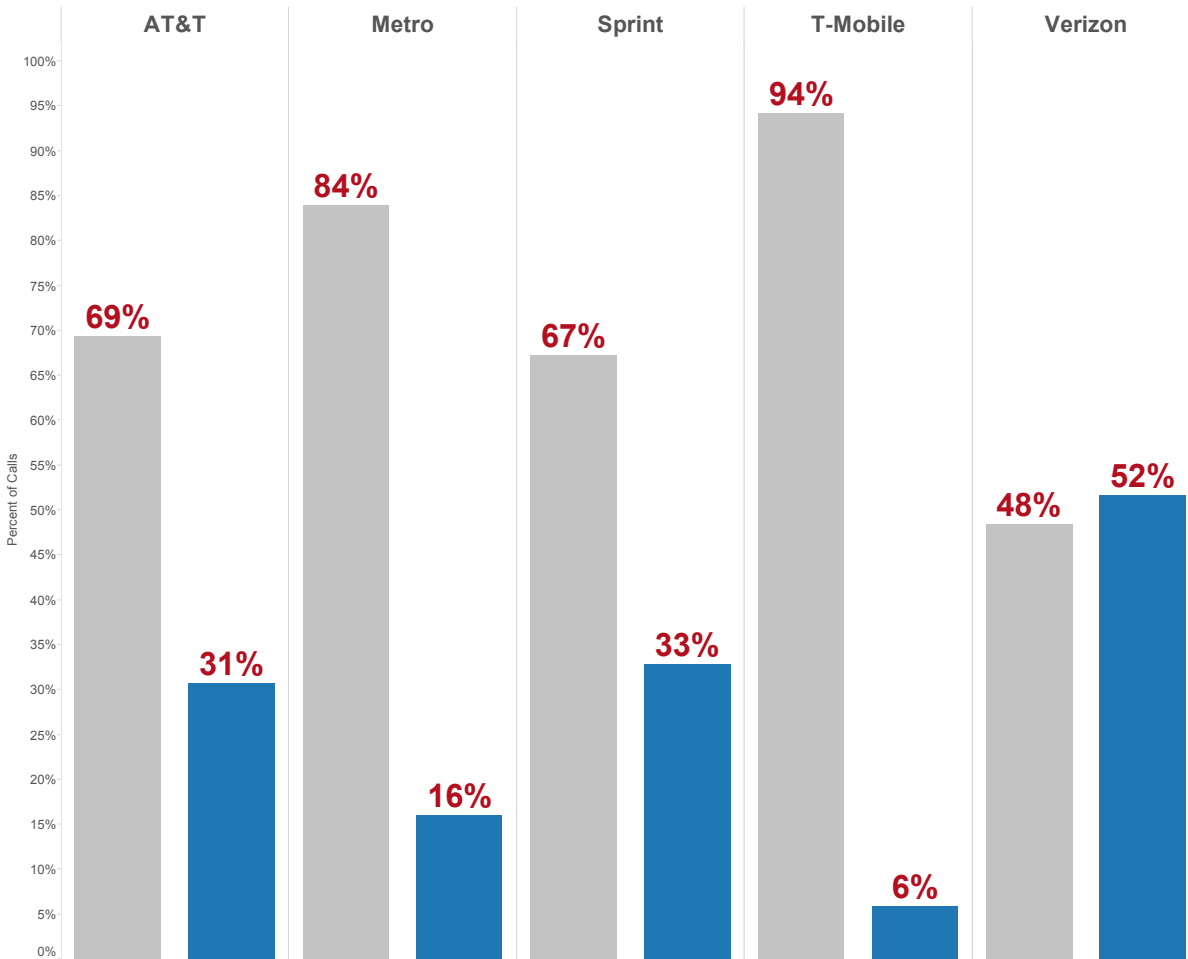
© 2013 Public Safety Network Reports generated with permission of PSAP representatives.



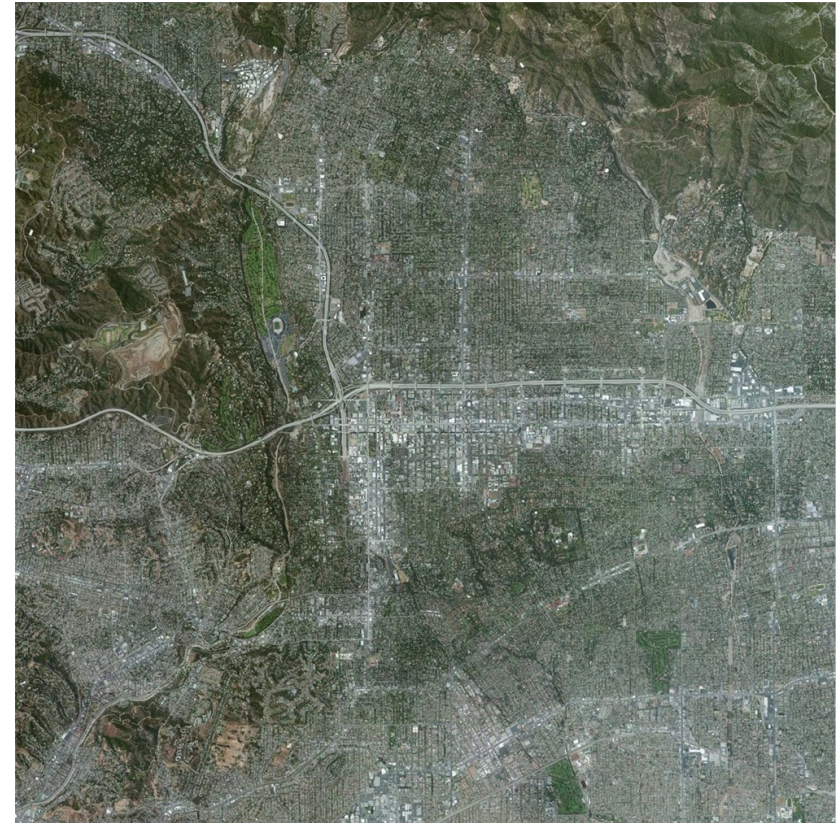
Location Yield
 ■ Phase I Calls
 ■ Phase II Calls



Phase at Call Termination for All Wireless 9-1-1 Calls Slide 2.2
Pasadena PD - December 2012



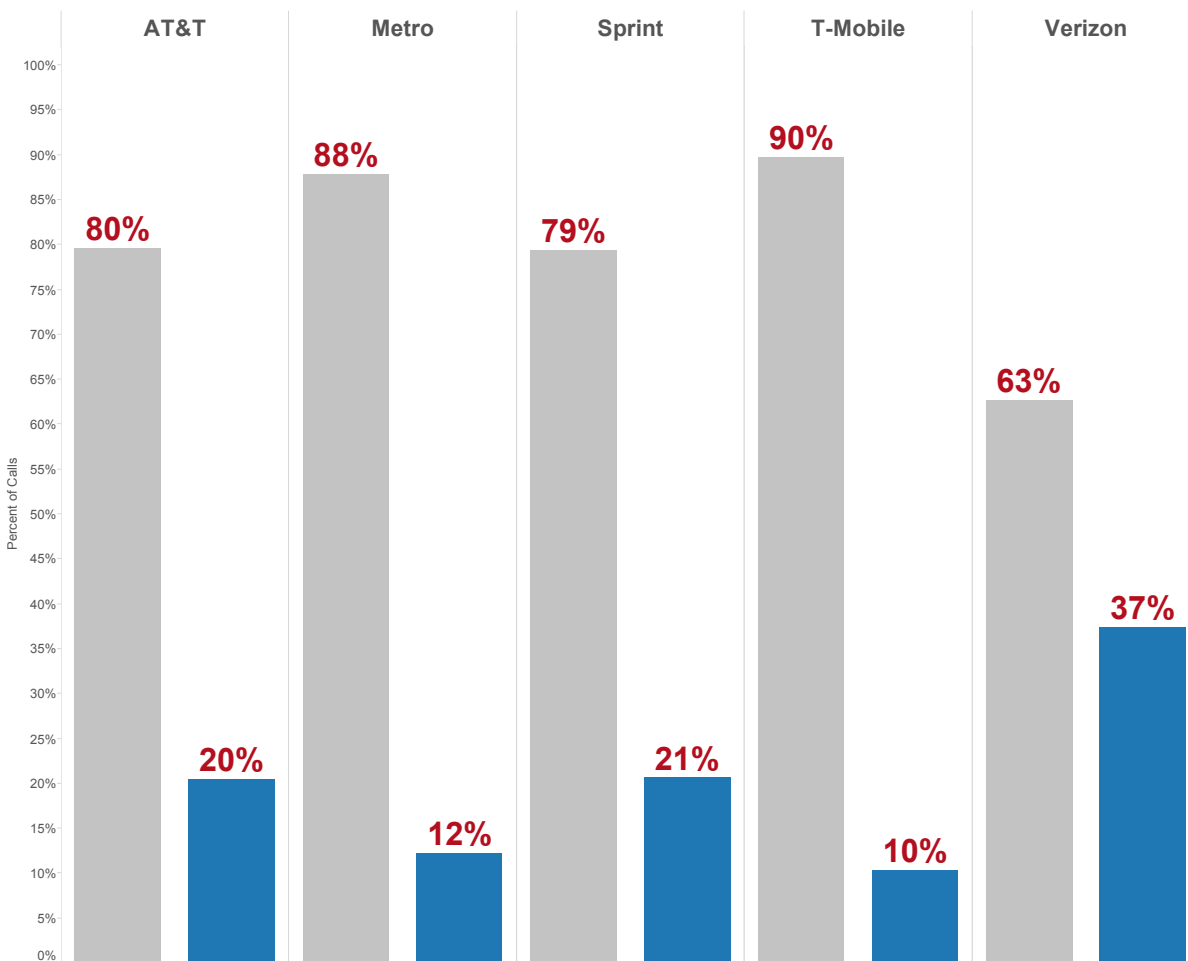
© 2013 Public Safety Network Reports generated with permission of PSAP representatives.



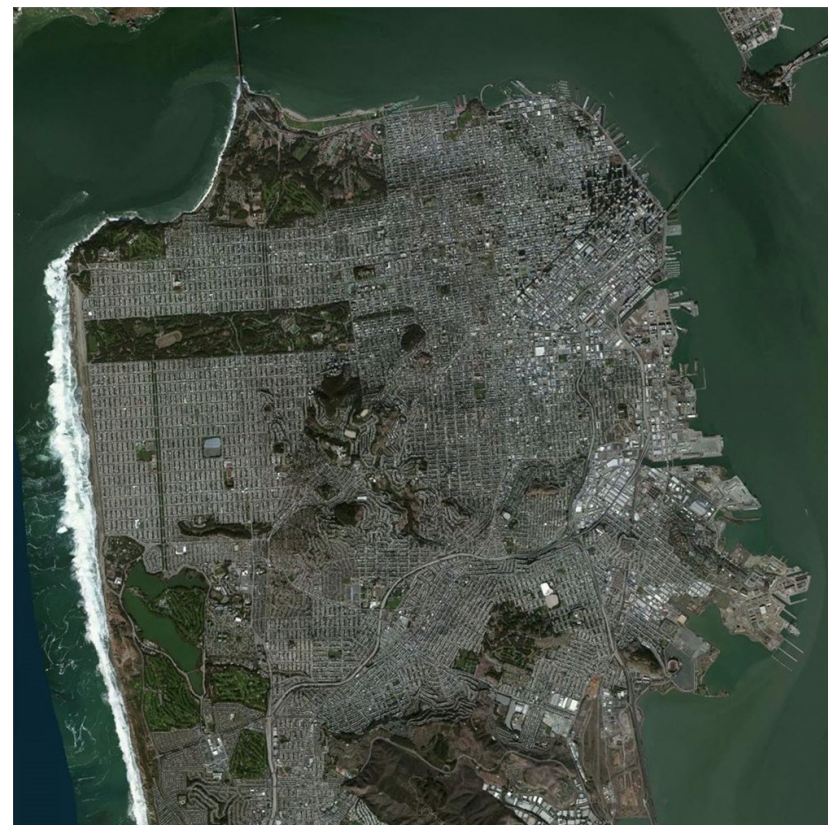
Location Yield
 ■ Phase I Calls
 ■ Phase II Calls



Phase at Call Termination for All Wireless 9-1-1 Calls Slide 2.3
San Francisco CEC - December 2012



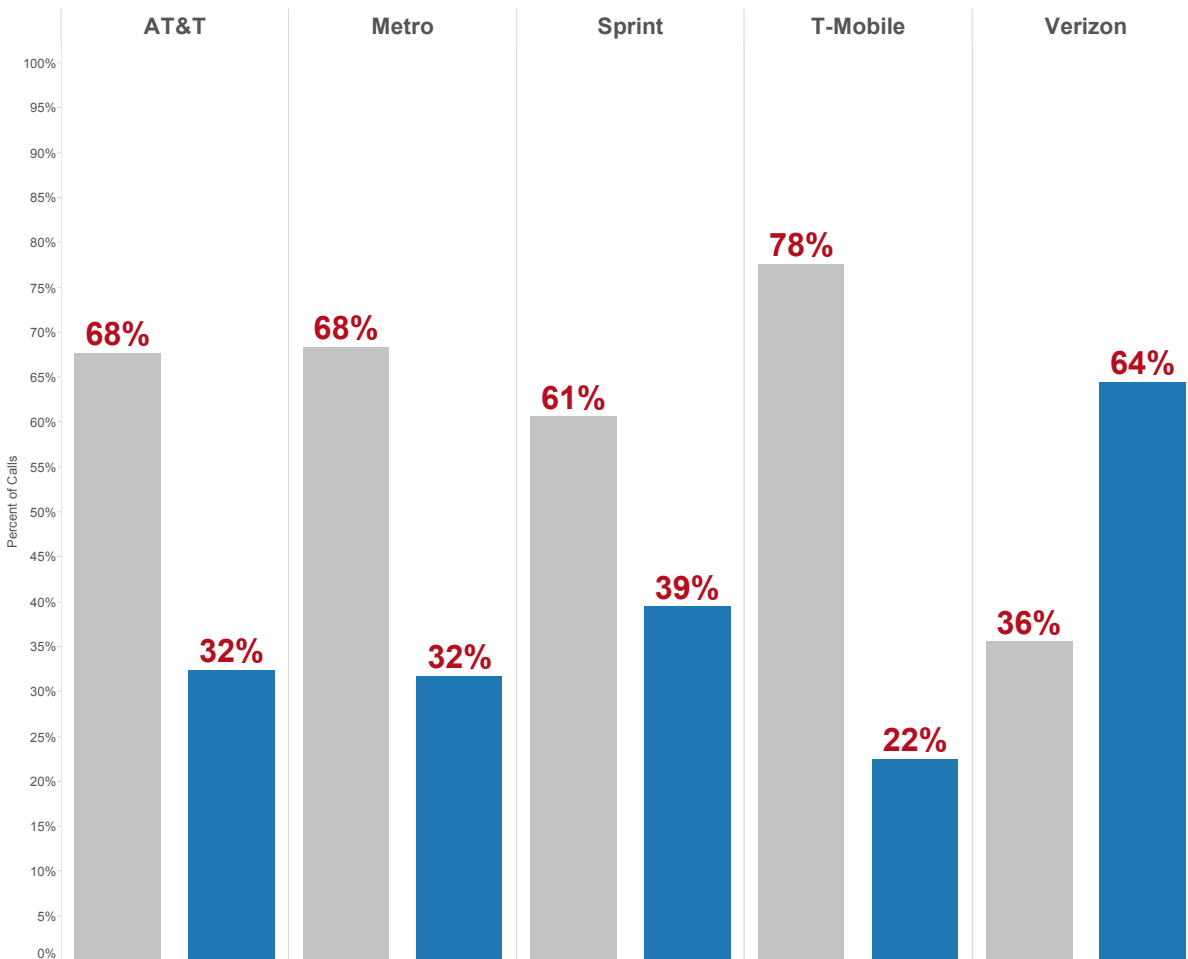
© 2013 Public Safety Network Reports generated with permission of PSAP representatives.



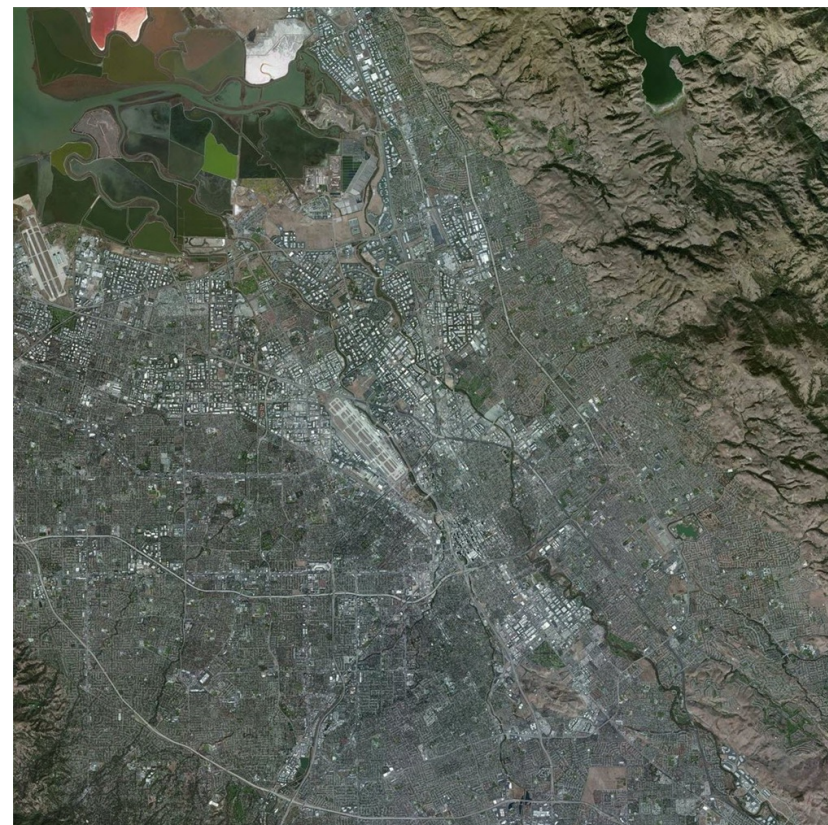
Location Yield
 ■ Phase I Calls
 ■ Phase II Calls

Public
Safety
Network

Phase at Call Termination for All Wireless 9-1-1 Calls Slide 2.4
San Jose Police/Fire - December 2012



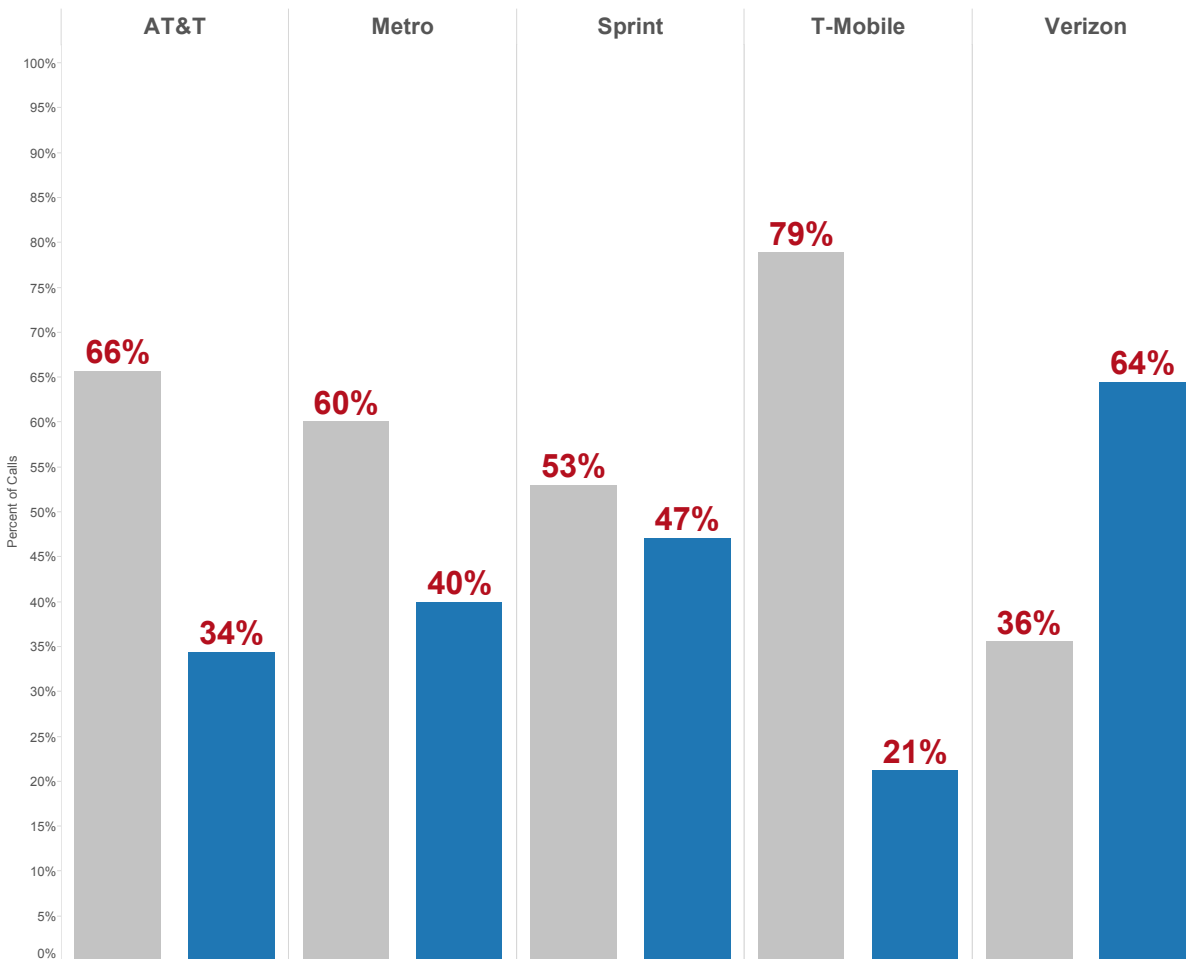
© 2013 Public Safety Network Reports generated with permission of PSAP representatives.



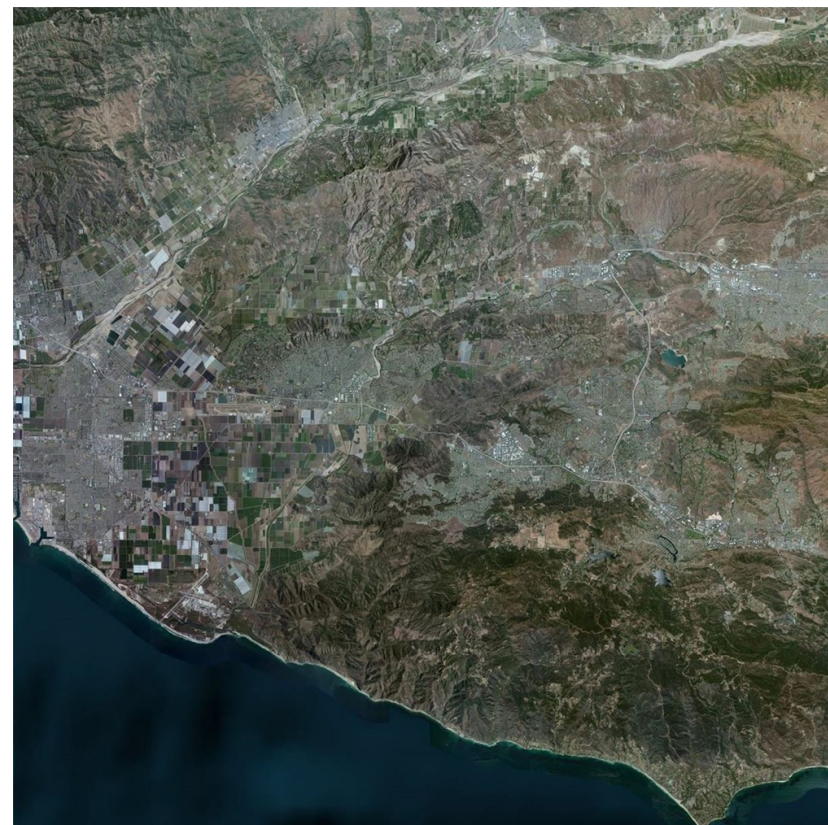
Location Yield
 ■ Phase I Calls
 ■ Phase II Calls

Public Safety
Network

Phase at Call Termination for All Wireless 9-1-1 Calls Slide 2.5
Ventura County SO - December 2012



© 2013 Public Safety Network Reports generated with permission of PSAP representatives.



Location Yield
 ■ Phase I Calls
 ■ Phase II Calls

Public Safety
Network

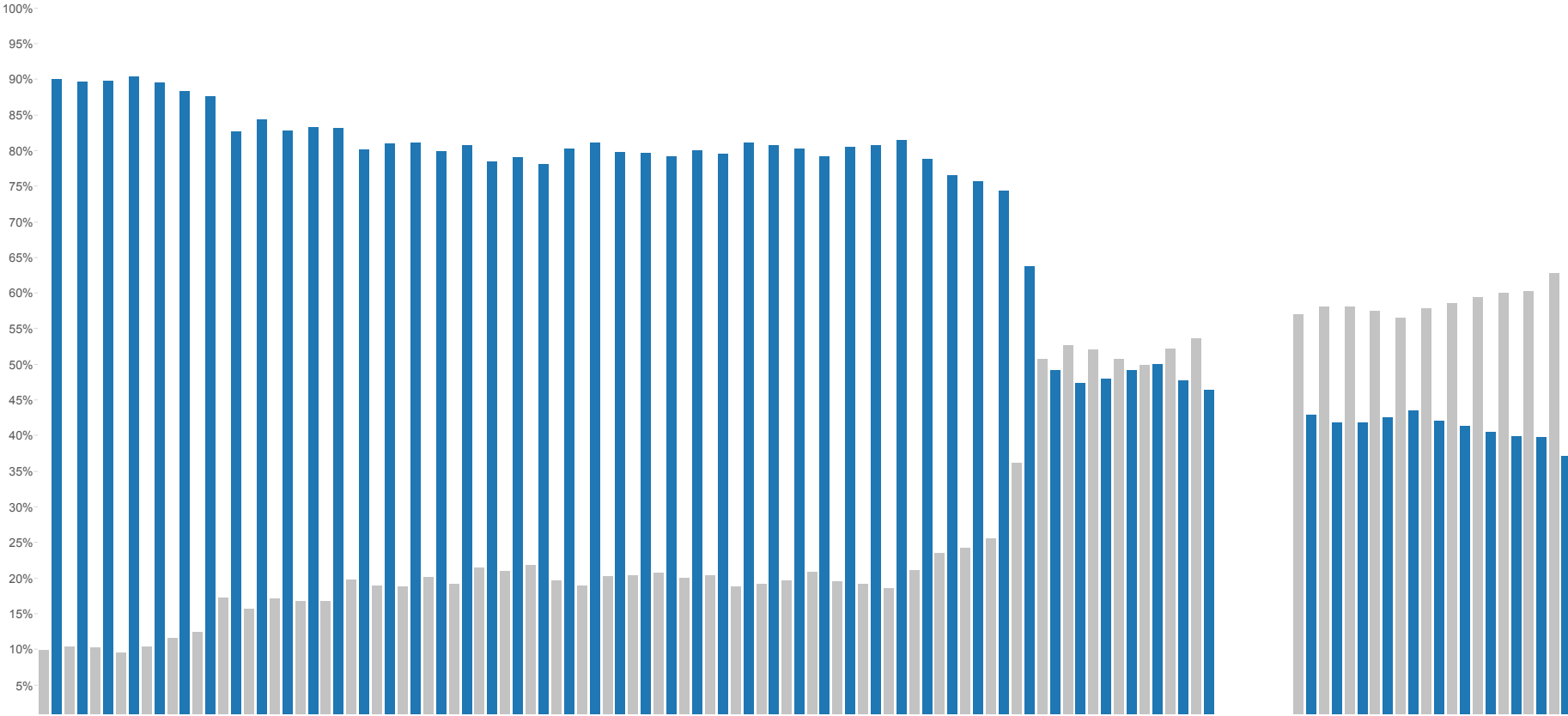
Phase at Call Termination for All 9-1-1 Wireless Calls Slide 3.1.1
Bakersfield PD - AT&T

Location Yield
■ Phase I Calls
■ Phase II Calls

90 - Beginning Percentage of Phase II Calls

Reporting data missing due to network reconfiguration performed by State of California.

Ending Percentage - 37 of Phase II Calls



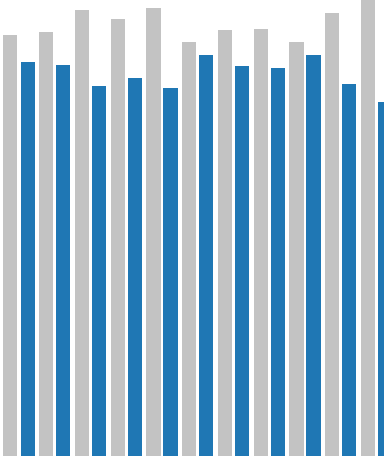
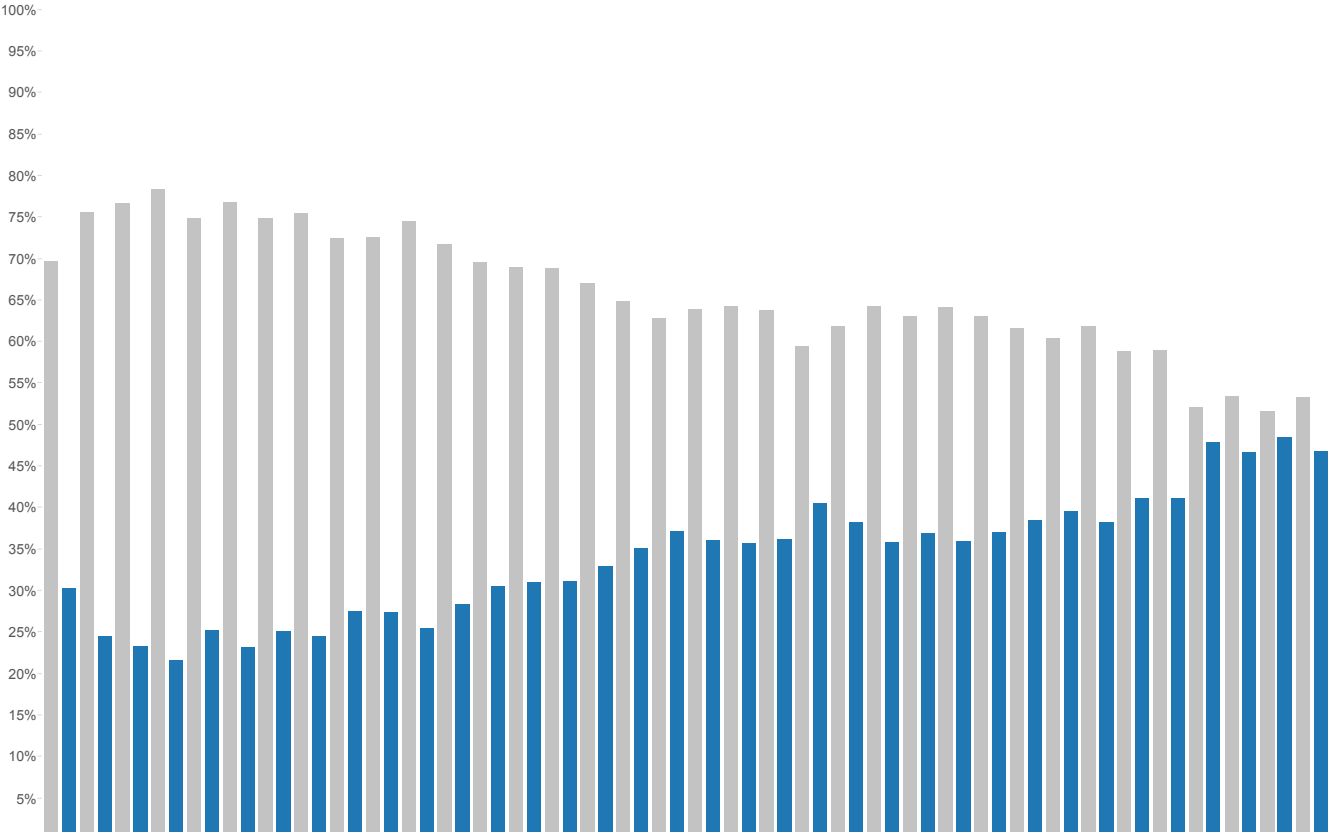
Phase at Call Termination for All 9-1-1 Wireless Calls Slide 3.1.2
Bakersfield PD - Metro

Location Yield
■ Phase I Calls
■ Phase II Calls

30 - Beginning Percentage
of Phase II Calls

Reporting data missing due to
network reconfiguration performed
by State of California.

Ending Percentage -
of Phase II Calls 43



Phase at Call Termination for All 9-1-1 Wireless Calls Slide 3.1.3
Bakersfield PD - Sprint

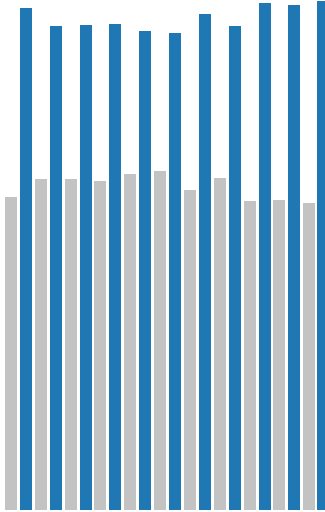
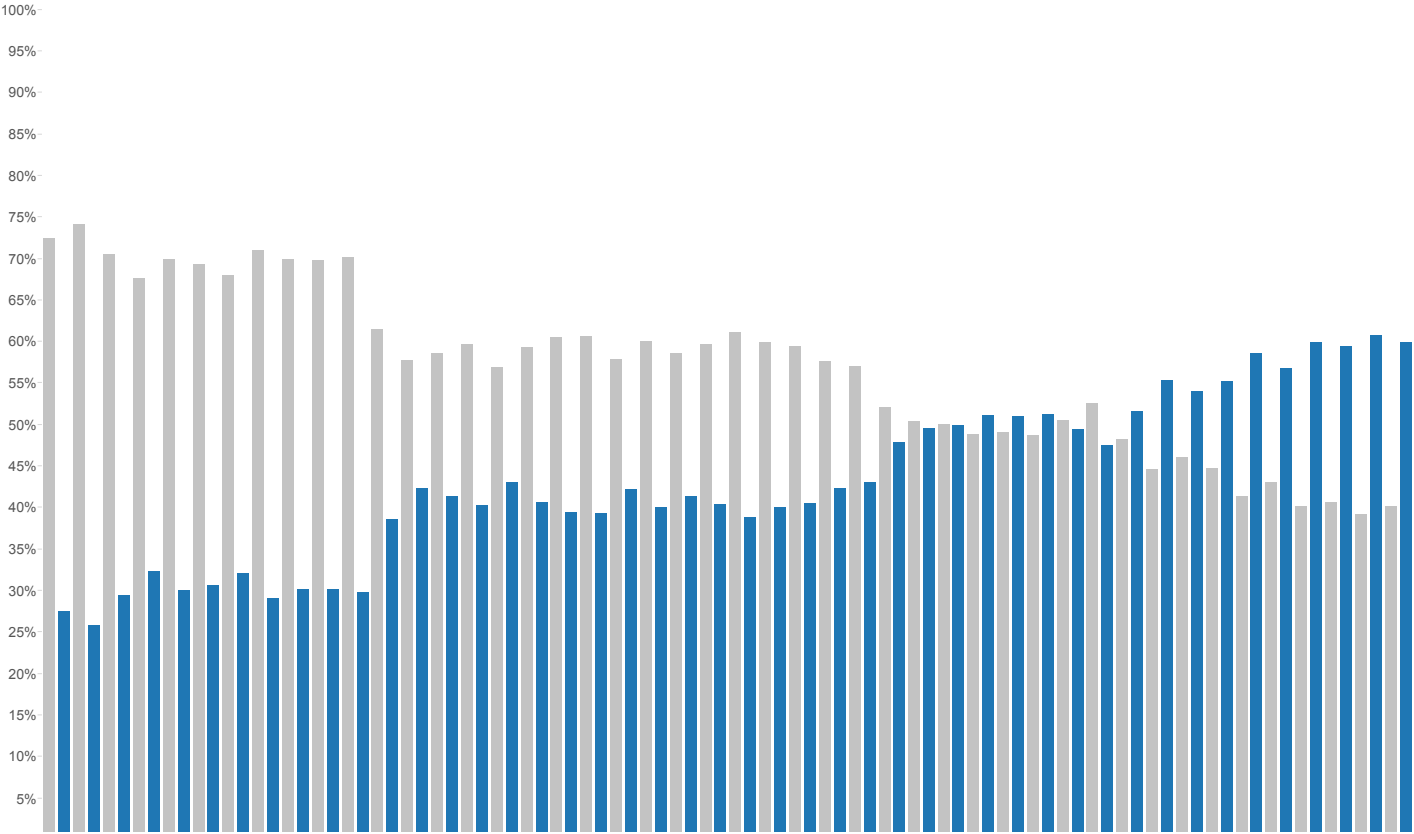
Location Yield
■ Phase I Calls
■ Phase II Calls

January 2008
February 2008
March 2008
April 2008
May 2008
June 2008
July 2008
August 2008
September 2008
October 2008
November 2008
December 2008
January 2009
February 2009
March 2009
April 2009
May 2009
June 2009
July 2009
August 2009
September 2009
October 2009
November 2009
December 2009
January 2010
February 2010
March 2010
April 2010
May 2010
June 2010
July 2010
August 2010
September 2010
October 2010
November 2010
December 2010
January 2011
February 2011
March 2011
April 2011
May 2011
June 2011
July 2011
August 2011
September 2011
October 2011
November 2011
December 2011
January 2012
February 2012
March 2012
April 2012
May 2012
June 2012
July 2012
August 2012
September 2012
October 2012
November 2012
December 2012

28 - Beginning Percentage
of Phase II Calls

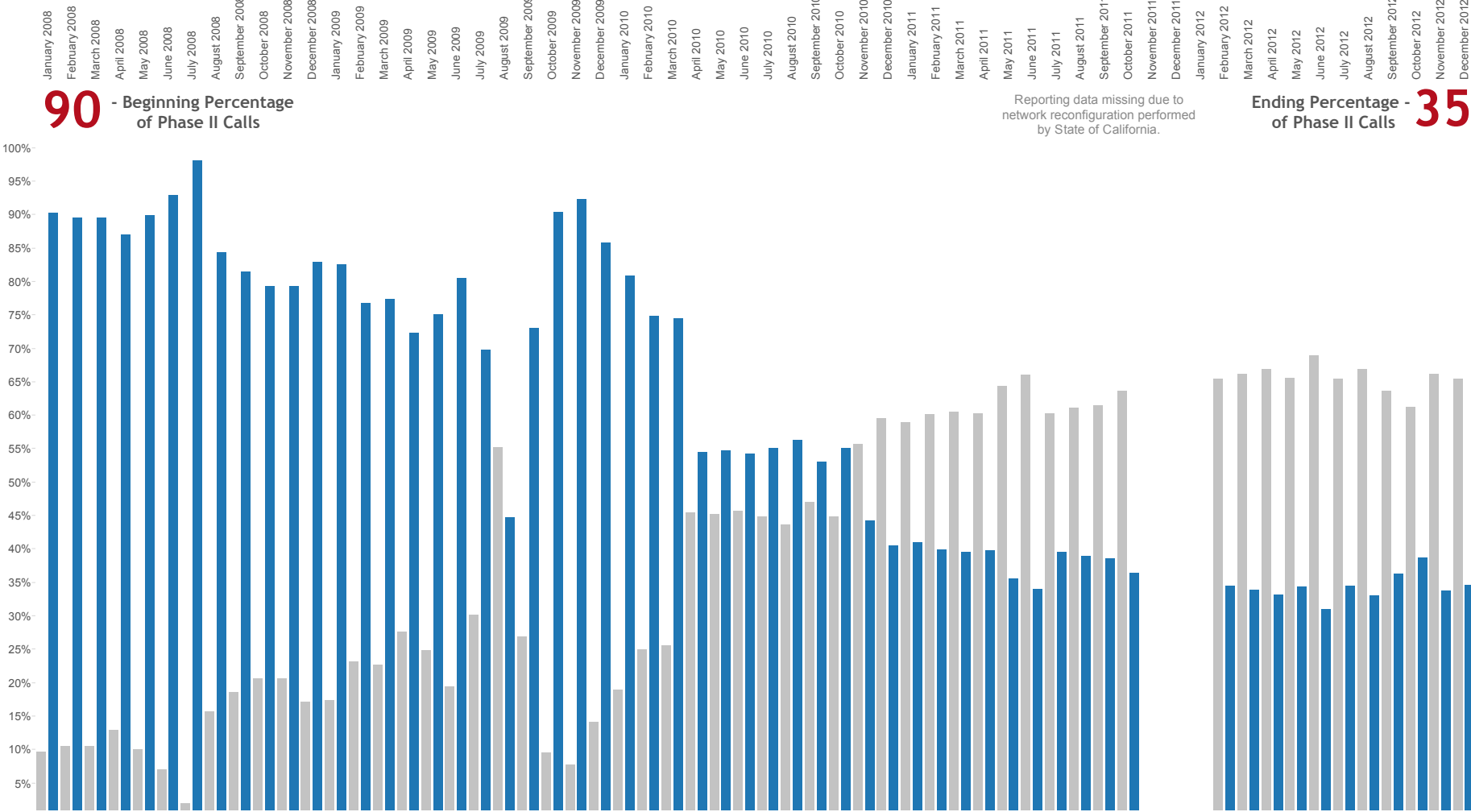
Reporting data missing due to
network reconfiguration performed
by State of California.

Ending Percentage - 62
of Phase II Calls



Phase at Call Termination for All 9-1-1 Wireless Calls Slide 3.1.4
Bakersfield PD - T-Mobile

Location Yield
■ Phase I Calls
■ Phase II Calls



90 - Beginning Percentage
of Phase II Calls

Reporting data missing due to
network reconfiguration performed
by State of California.

Ending Percentage - 35
of Phase II Calls



Phase at Call Termination for All 9-1-1 Wireless Calls Slide 3.1.5
Bakersfield PD - Verizon

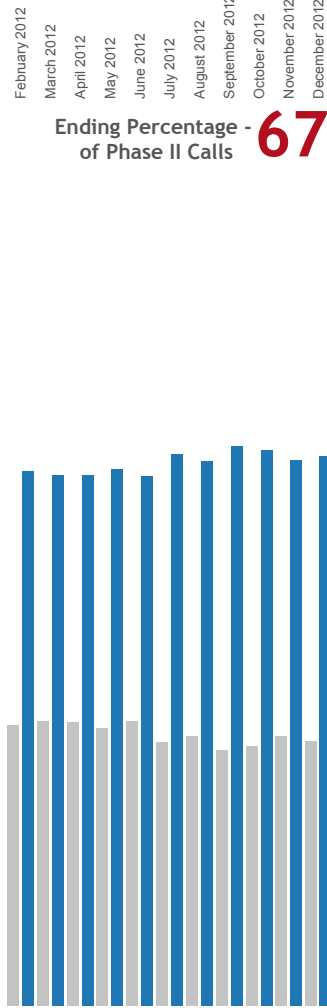
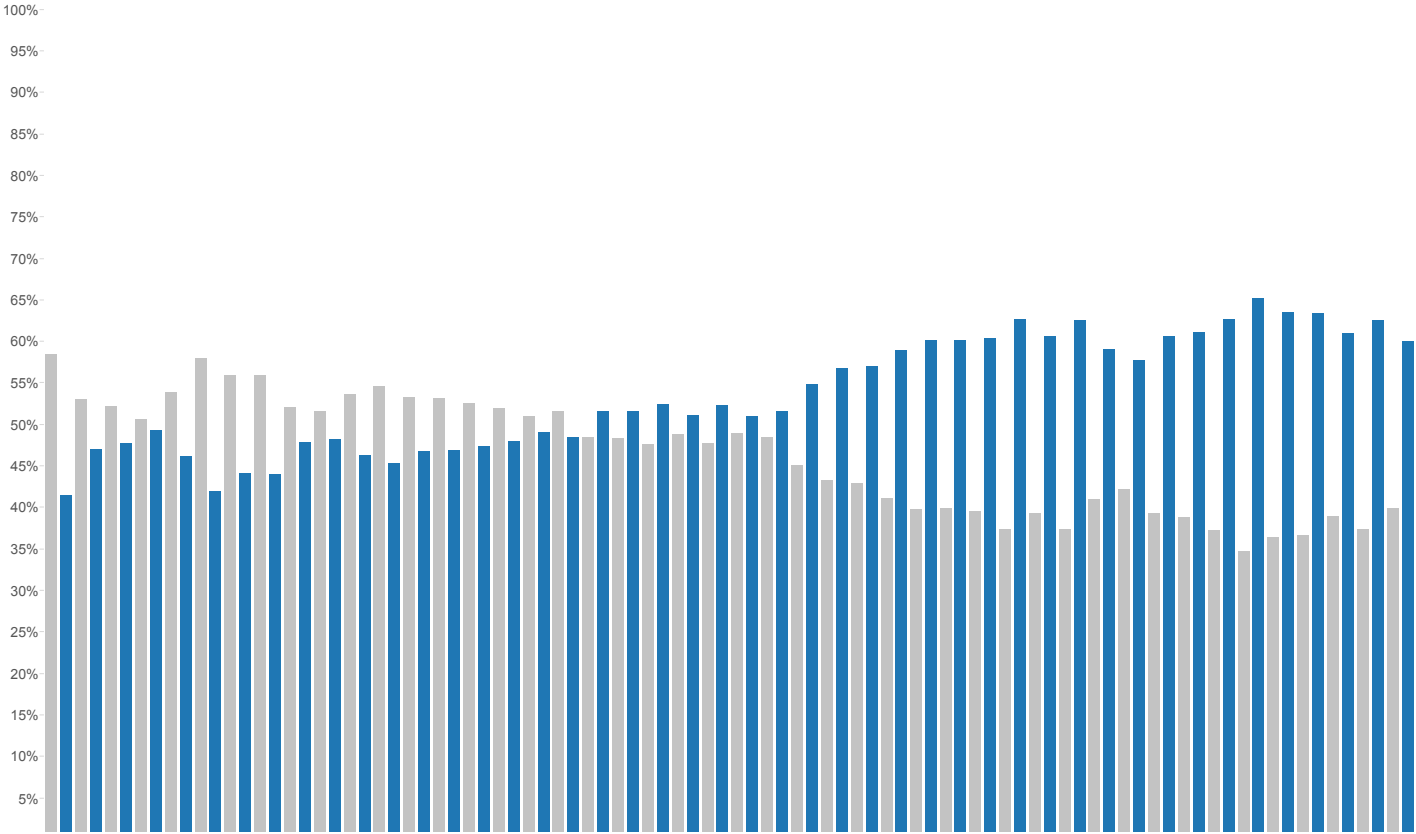
Location Yield
■ Phase I Calls
■ Phase II Calls

January 2008
February 2008
March 2008
April 2008
May 2008
June 2008
July 2008
August 2008
September 2008
October 2008
November 2008
December 2008
January 2009
February 2009
March 2009
April 2009
May 2009
June 2009
July 2009
August 2009
September 2009
October 2009
November 2009
December 2009
January 2010
February 2010
March 2010
April 2010
May 2010
June 2010
July 2010
August 2010
September 2010
October 2010
November 2010
December 2010
January 2011
February 2011
March 2011
April 2011
May 2011
June 2011
July 2011
August 2011
September 2011
October 2011
November 2011
December 2011
January 2012
February 2012
March 2012
April 2012
May 2012
June 2012
July 2012
August 2012
September 2012
October 2012
November 2012
December 2012

42 - Beginning Percentage of Phase II Calls

Reporting data missing due to network reconfiguration performed by State of California.

Ending Percentage - 67 of Phase II Calls

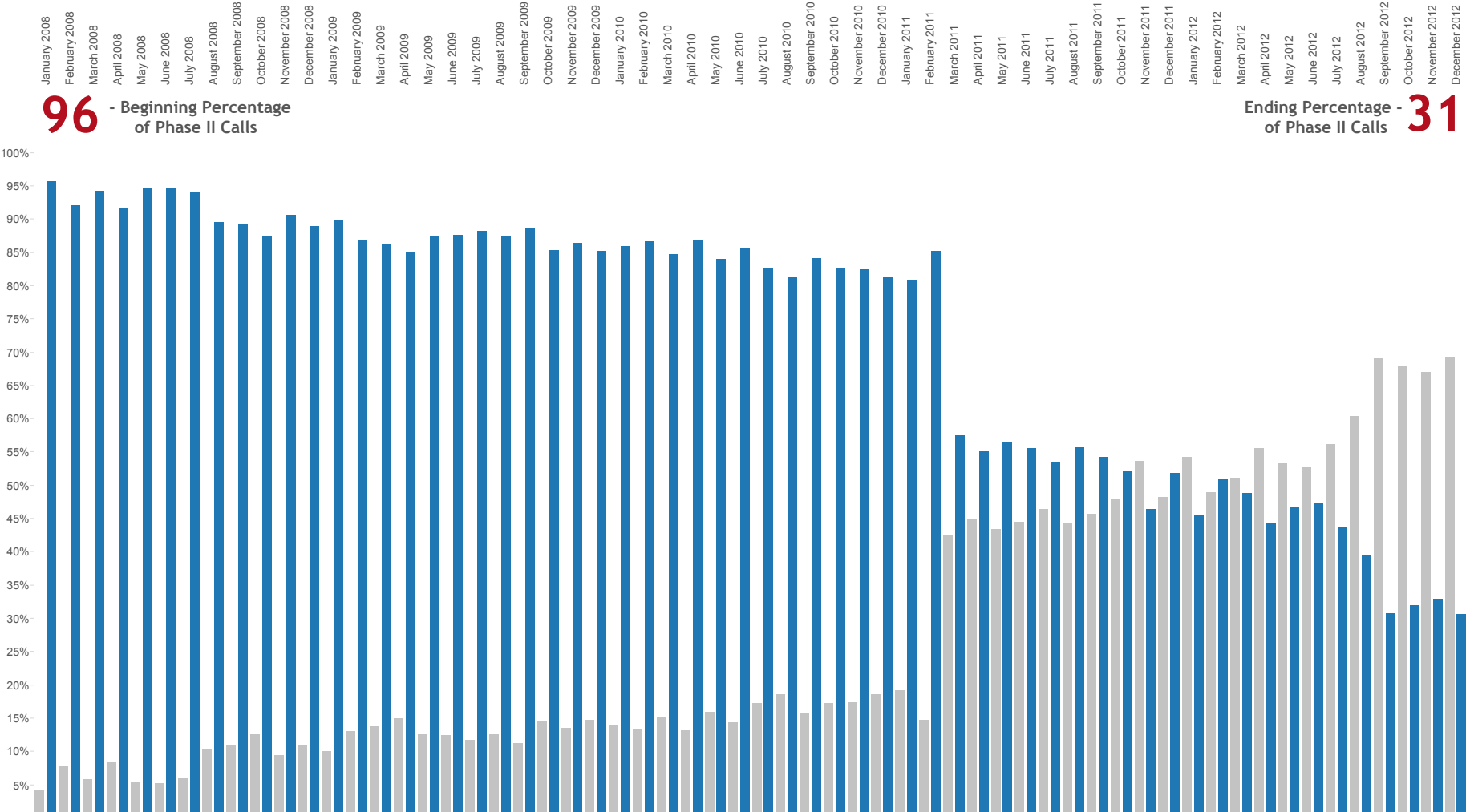


Phase at Call Termination for All 9-1-1 Wireless Calls Slide 3.2.1
Pasadena PD - AT&T

Location Yield
■ Phase I Calls
■ Phase II Calls

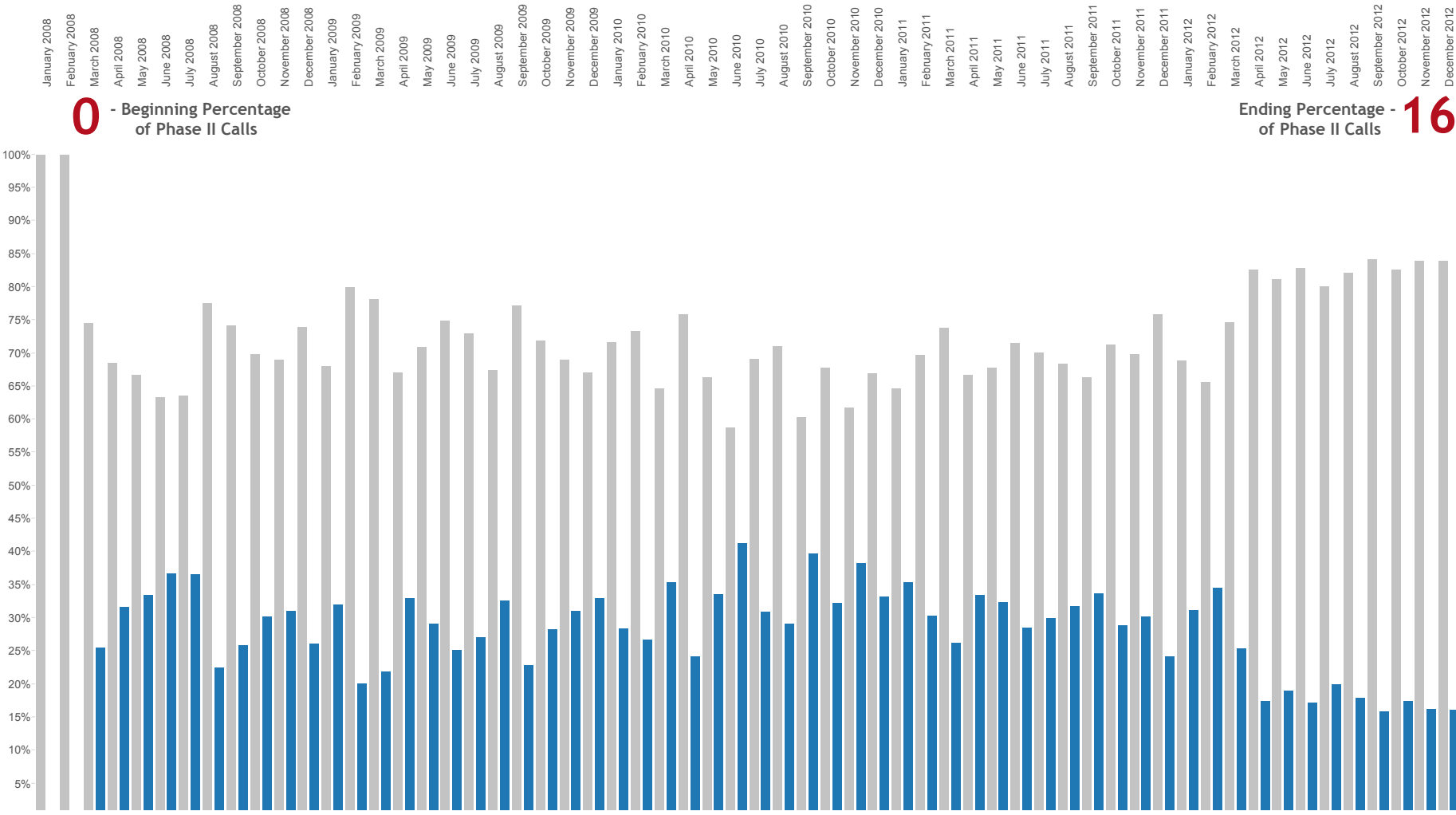
96 - Beginning Percentage
of Phase II Calls

Ending Percentage - 31
of Phase II Calls



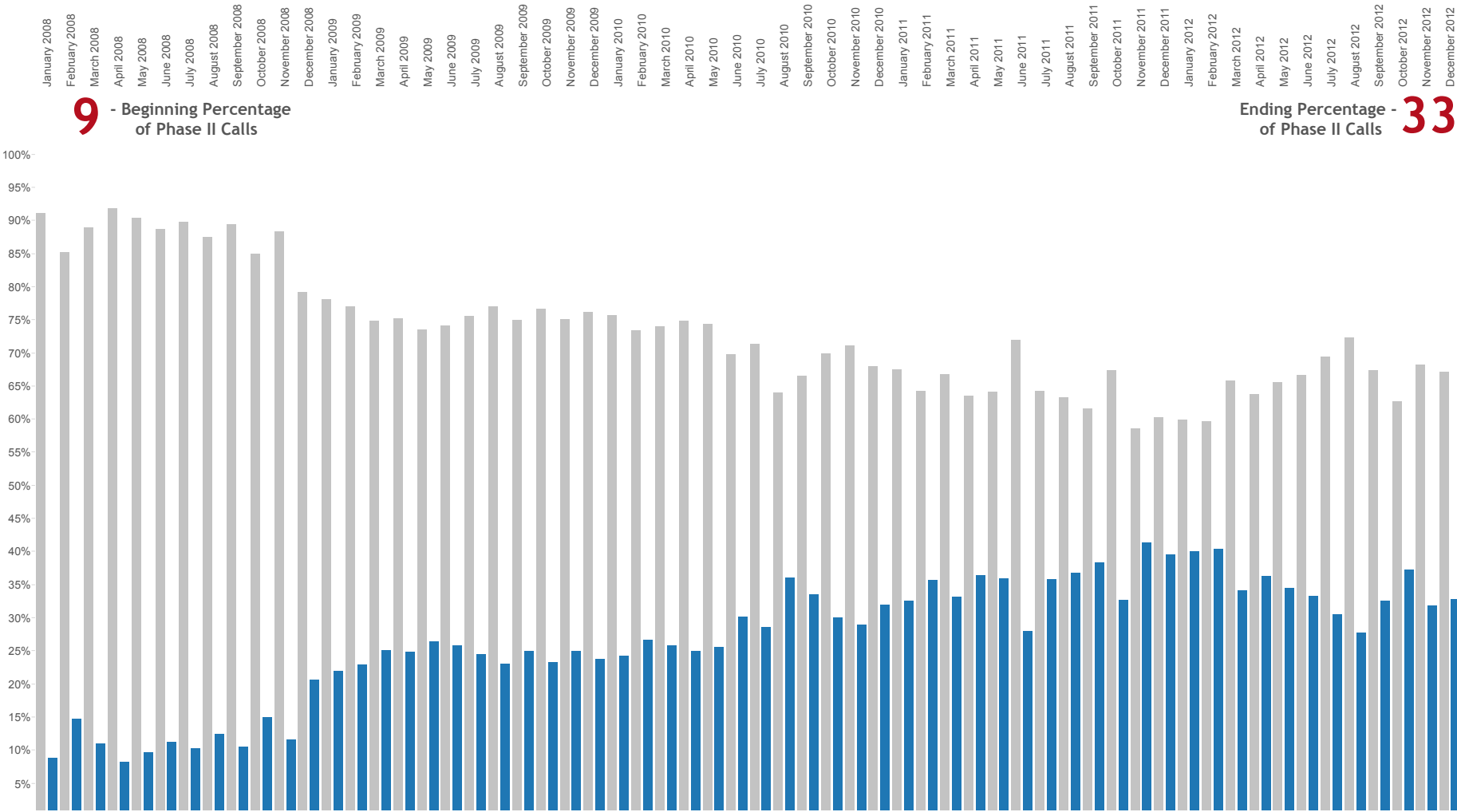
Phase at Call Termination for All 9-1-1 Wireless Calls Slide 3.2.2
Pasadena PD - Metro

Location Yield
■ Phase I Calls
■ Phase II Calls



Phase at Call Termination for All 9-1-1 Wireless Calls Slide 3.2.3
Pasadena PD - Sprint

Location Yield
■ Phase I Calls
■ Phase II Calls



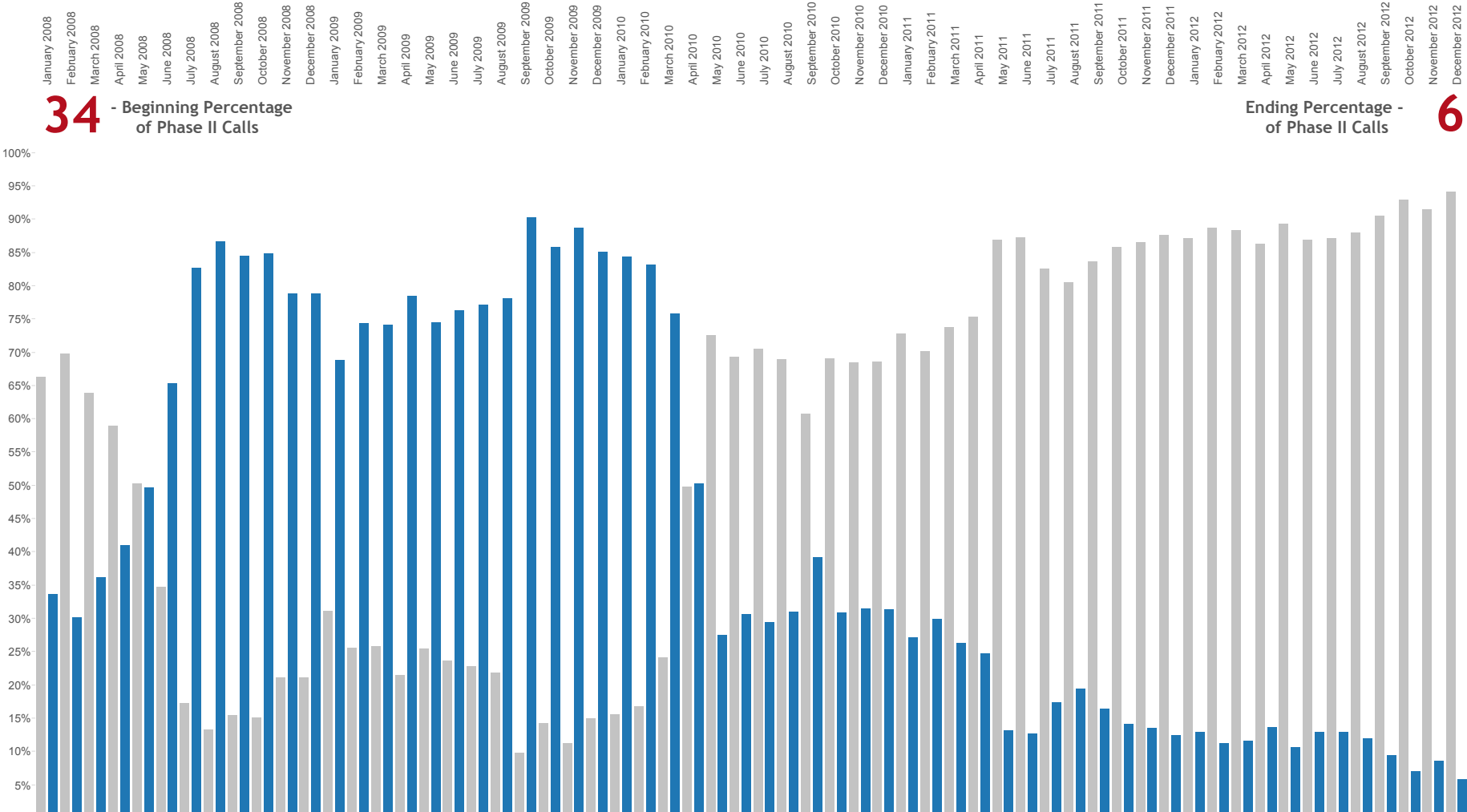
Phase at Call Termination for All 9-1-1 Wireless Calls Slide 3.2.4
Pasadena PD - T-Mobile

Location Yield
■ Phase I Calls
■ Phase II Calls

34 - Beginning Percentage
of Phase II Calls

Ending Percentage -
of Phase II Calls

6

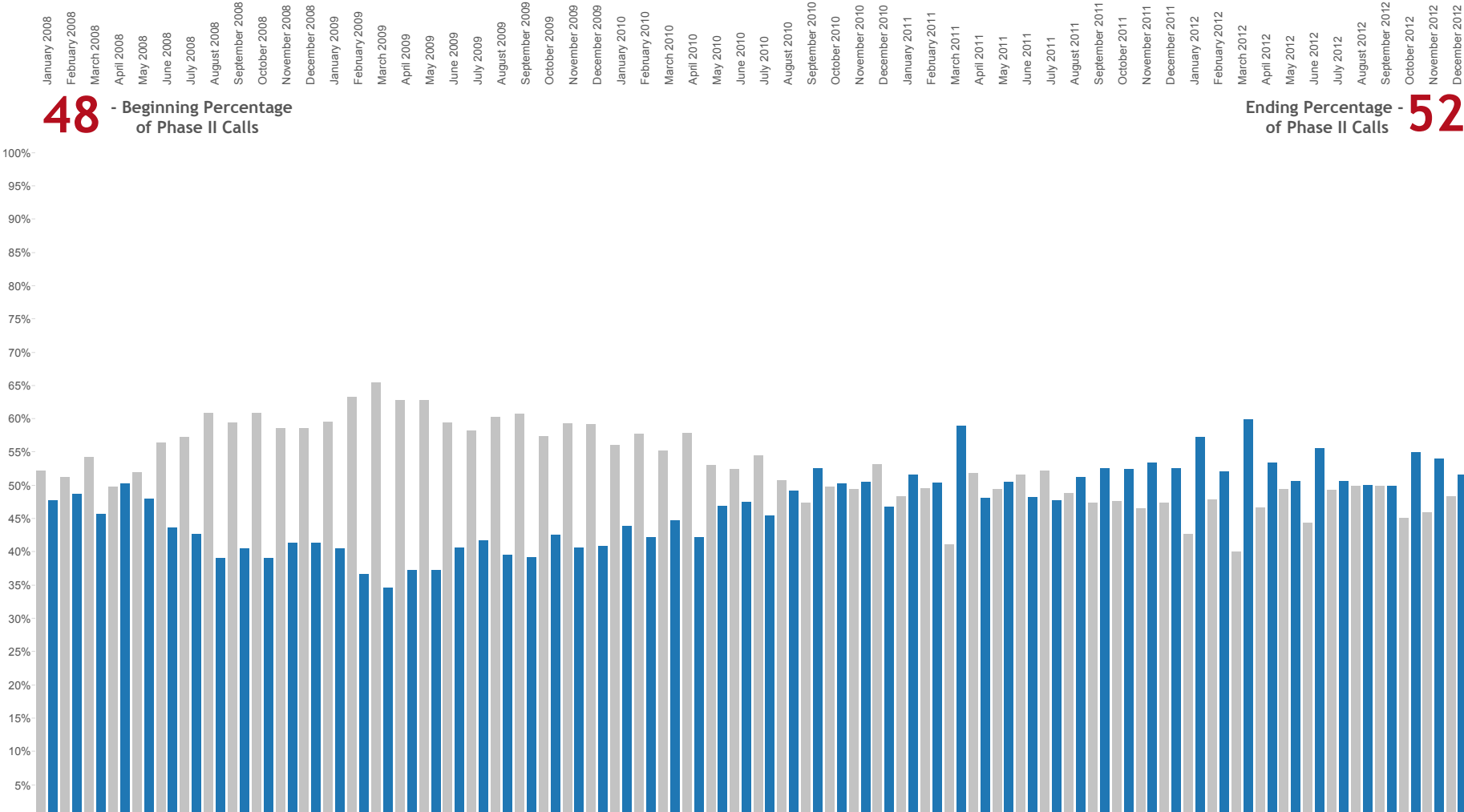


Phase at Call Termination for All 9-1-1 Wireless Calls Slide 3.2.5
Pasadena PD - Verizon

Location Yield
■ Phase I Calls
■ Phase II Calls

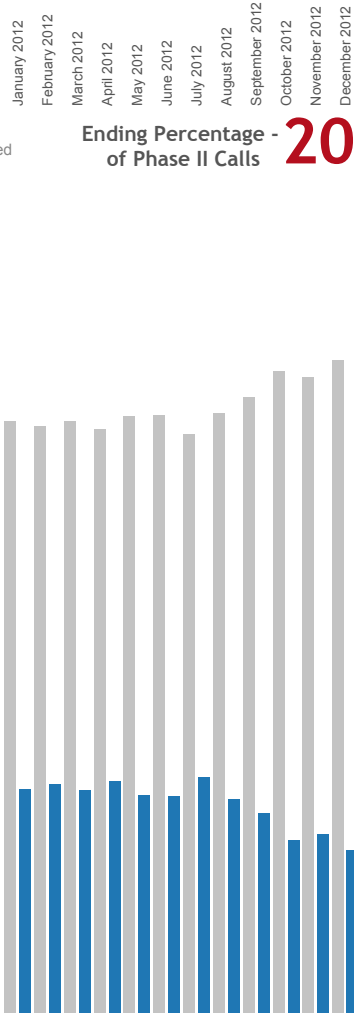
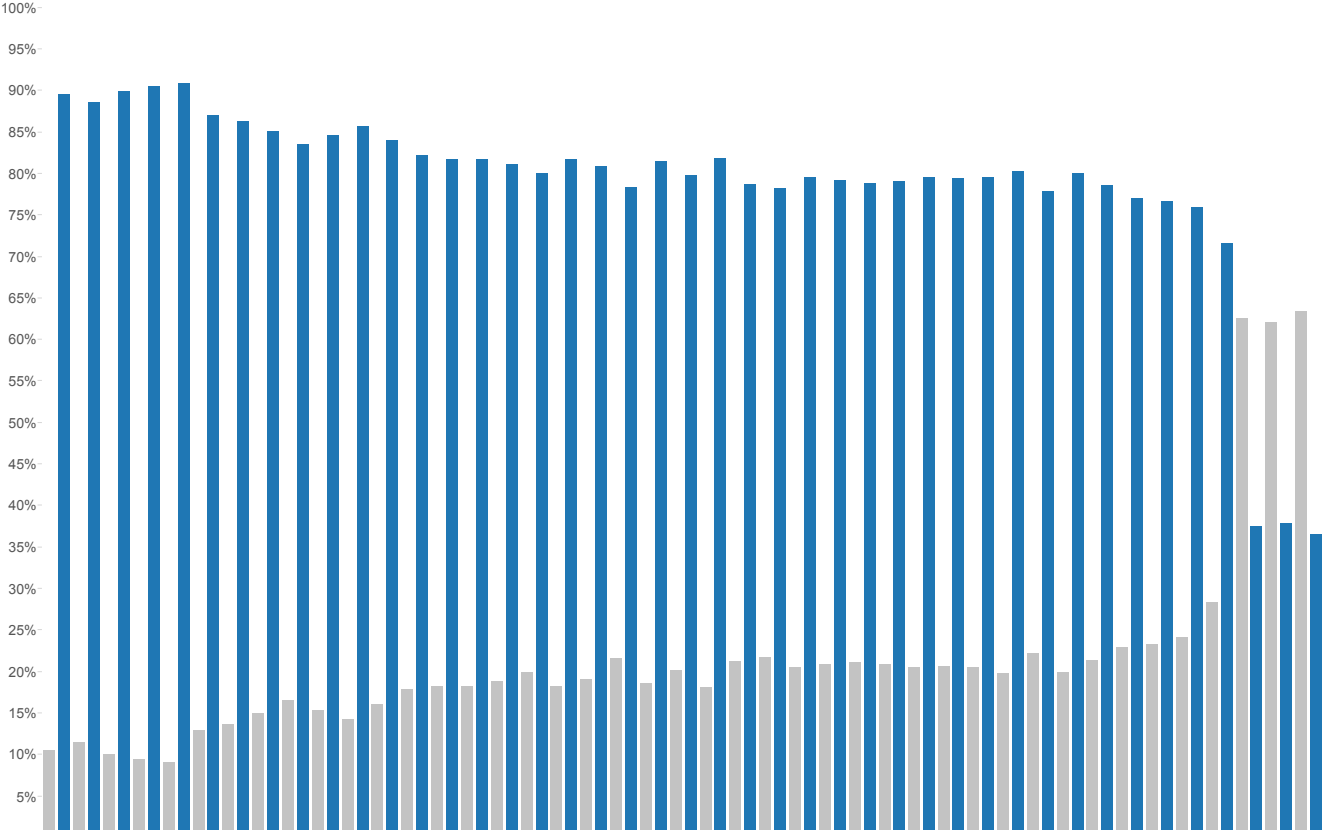
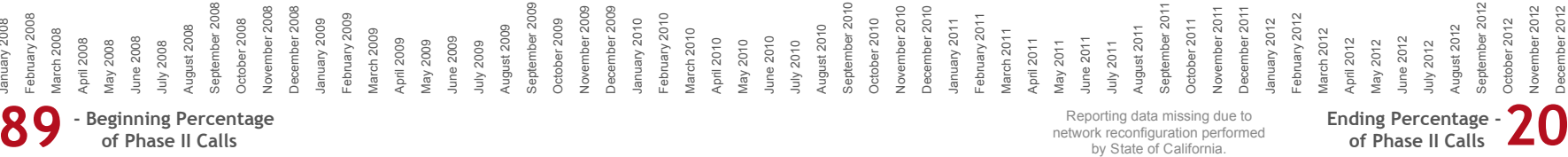
48 - Beginning Percentage
of Phase II Calls

Ending Percentage -
of Phase II Calls 52



Phase at Call Termination for All 9-1-1 Wireless Calls Slide 3.3.1
San Francisco CEC - AT&T

Location Yield
■ Phase I Calls
■ Phase II Calls



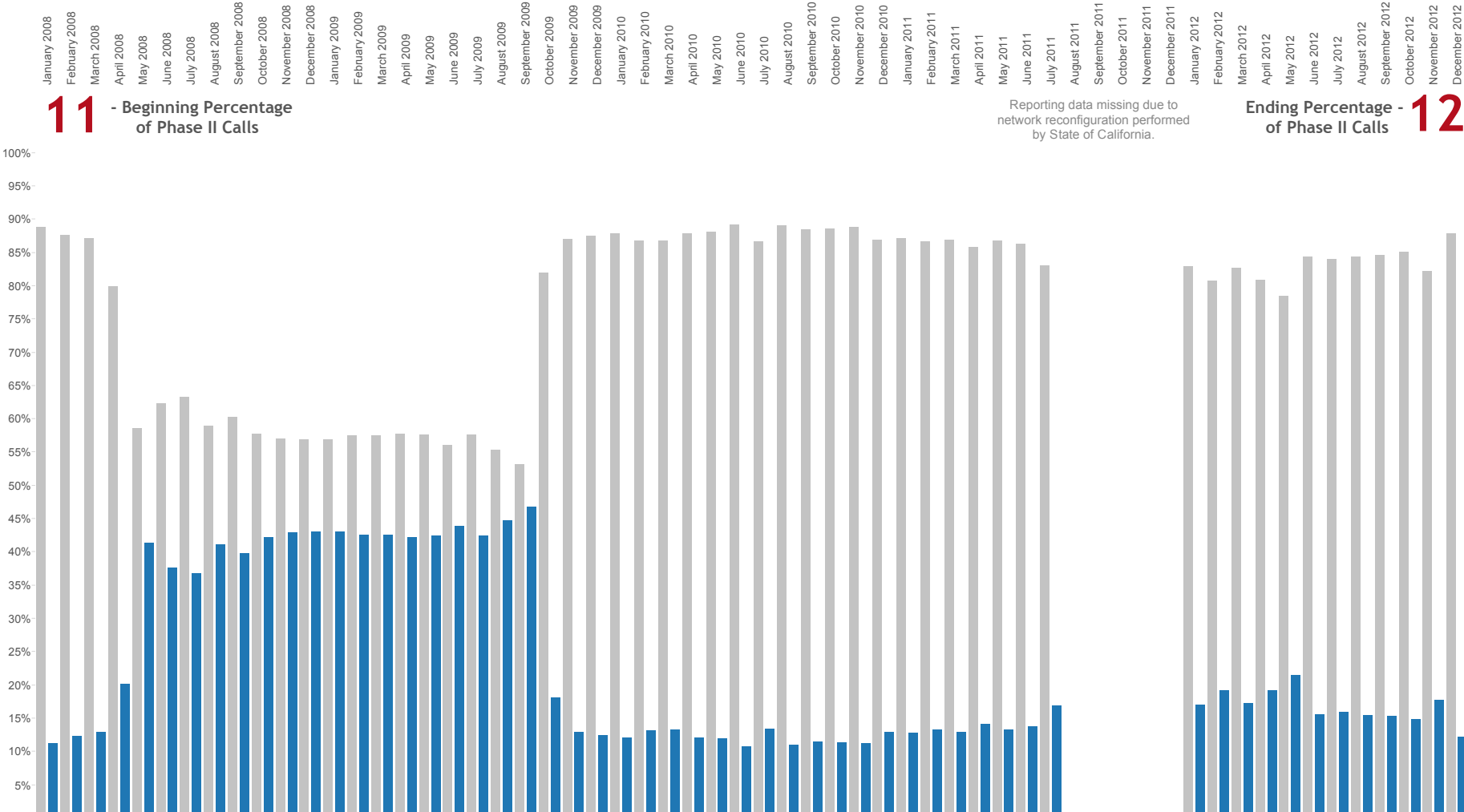
Phase at Call Termination for All 9-1-1 Wireless Calls Slide 3.3.2
San Francisco CEC - Metro

Location Yield
■ Phase I Calls
■ Phase II Calls

11 - Beginning Percentage
of Phase II Calls

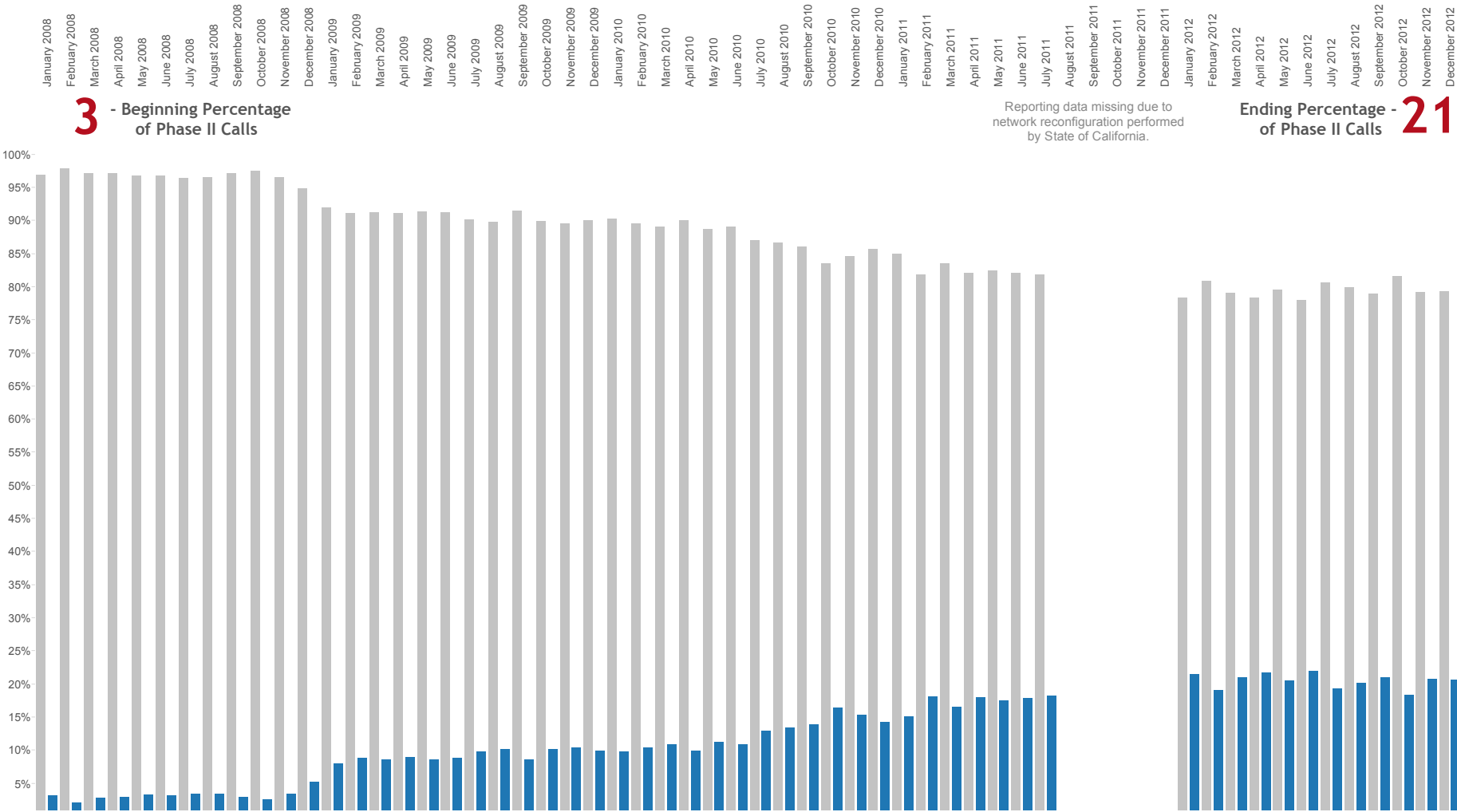
Reporting data missing due to
network reconfiguration performed
by State of California.

Ending Percentage -
of Phase II Calls 12



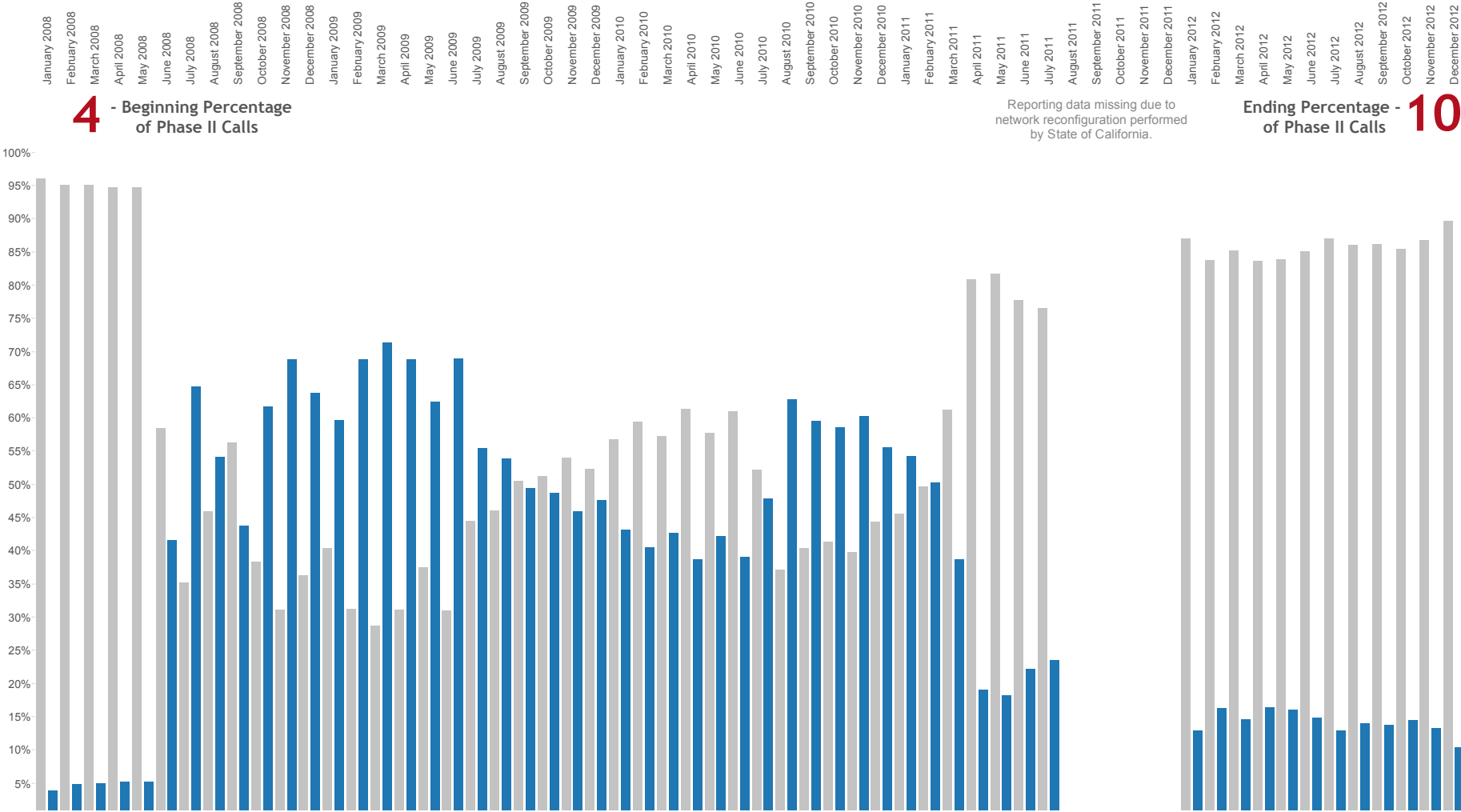
Phase at Call Termination for All 9-1-1 Wireless Calls Slide 3.3.3
San Francisco CEC - Sprint

Location Yield
■ Phase I Calls
■ Phase II Calls



Phase at Call Termination for All 9-1-1 Wireless Calls Slide 3.3.4
San Francisco CEC - T-Mobile

Location Yield
■ Phase I Calls
■ Phase II Calls



Phase at Call Termination for All 9-1-1 Wireless Calls Slide 3.3.5
San Francisco CEC - Verizon

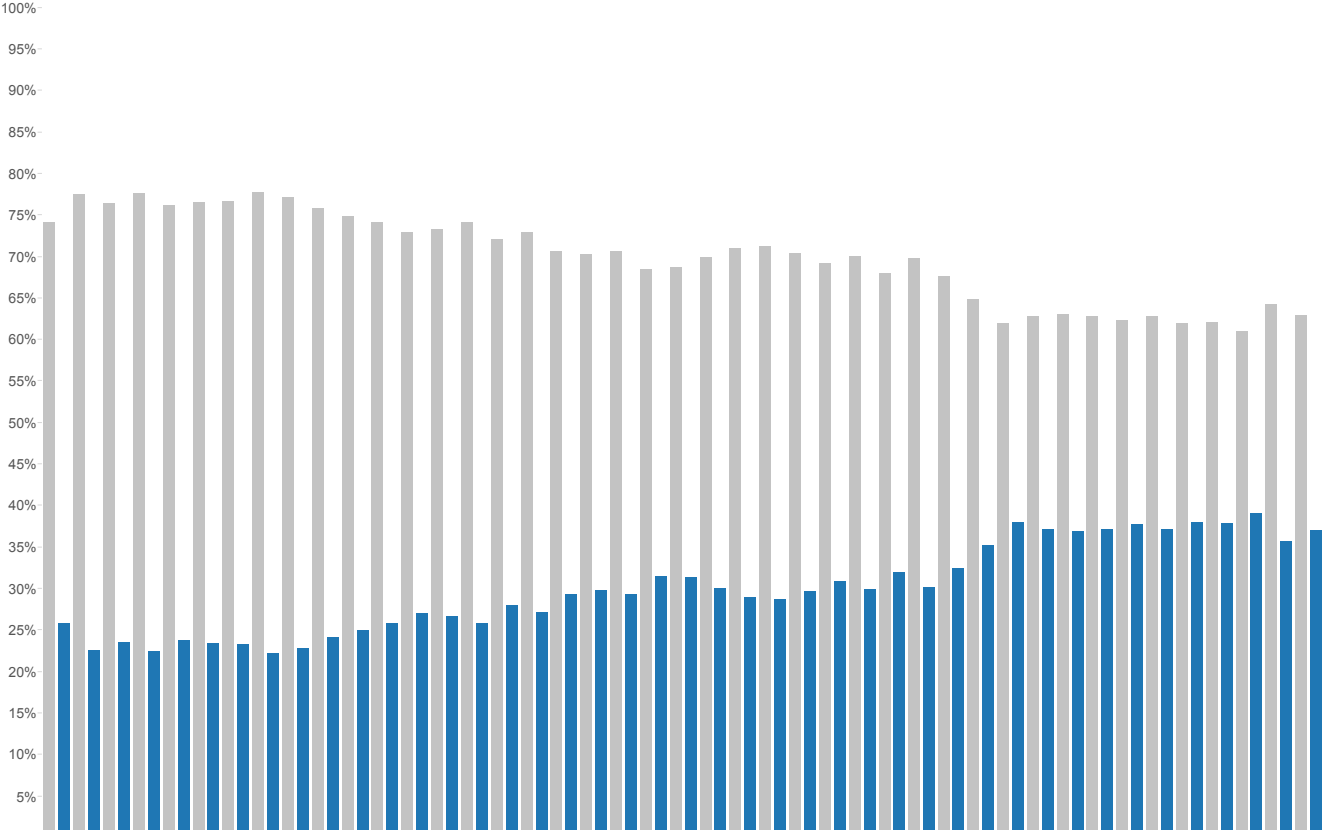
Location Yield
■ Phase I Calls
■ Phase II Calls

January 2008
February 2008
March 2008
April 2008
May 2008
June 2008
July 2008
August 2008
September 2008
October 2008
November 2008
December 2008
January 2009
February 2009
March 2009
April 2009
May 2009
June 2009
July 2009
August 2009
September 2009
October 2009
November 2009
December 2009
January 2010
February 2010
March 2010
April 2010
May 2010
June 2010
July 2010
August 2010
September 2010
October 2010
November 2010
December 2010
January 2011
February 2011
March 2011
April 2011
May 2011
June 2011
July 2011
August 2011
September 2011
October 2011
November 2011
December 2011
January 2012
February 2012
March 2012
April 2012
May 2012
June 2012
July 2012
August 2012
September 2012
October 2012
November 2012
December 2012

26 - Beginning Percentage of Phase II Calls

Reporting data missing due to network reconfiguration performed by State of California.

Ending Percentage - 37 of Phase II Calls

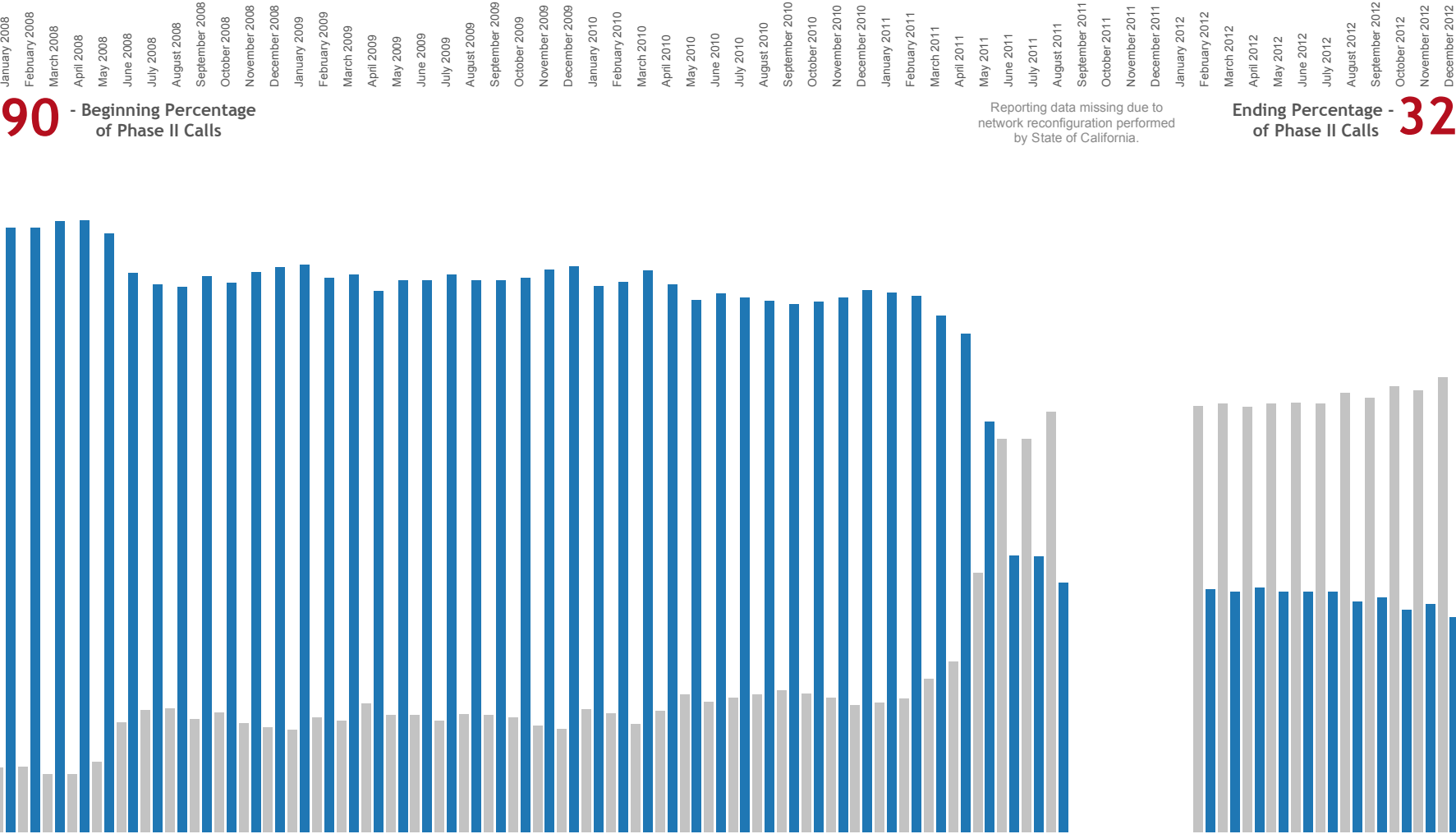


© 2013 Public Safety Network Reports generated with permission of PSAP representatives.



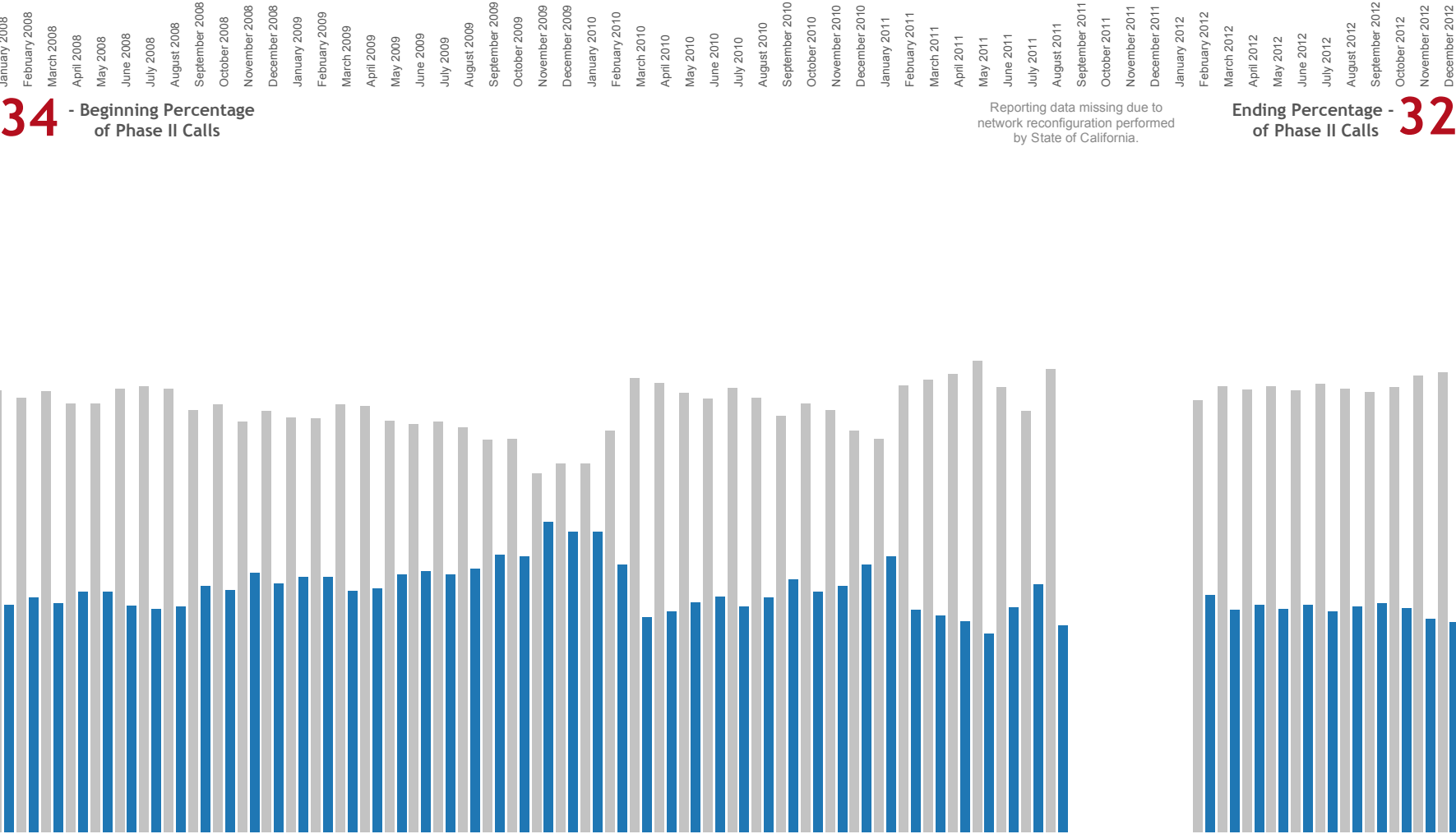
Phase at Call Termination for All 9-1-1 Wireless Calls Slide 3.4.1
San Jose Police/Fire - AT&T

Location Yield
■ Phase I Calls
■ Phase II Calls



Phase at Call Termination for All 9-1-1 Wireless Calls Slide 3.4.2
San Jose Police/Fire - Metro

Location Yield
■ Phase I Calls
■ Phase II Calls



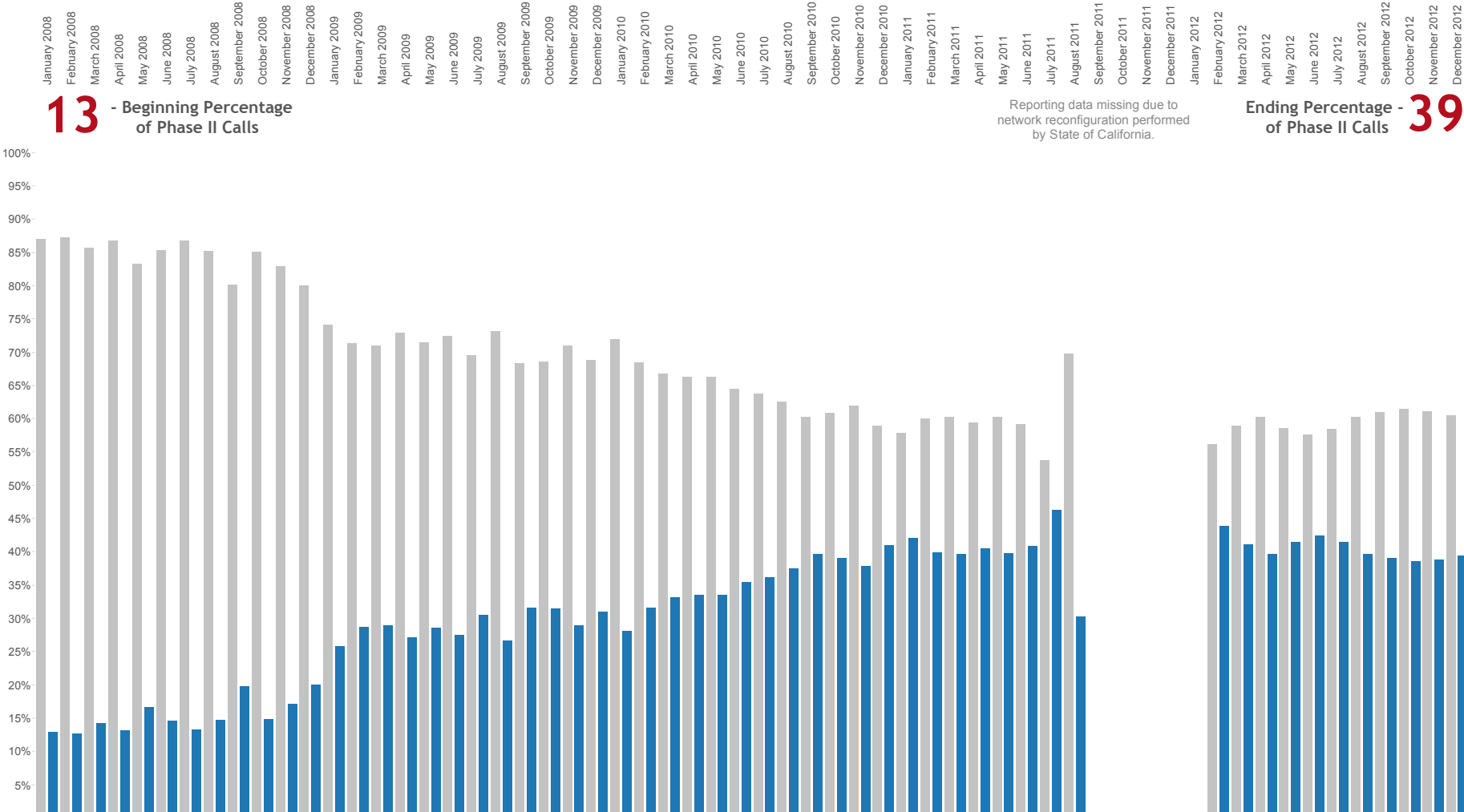
Phase at Call Termination for All 9-1-1 Wireless Calls Slide 3.4.3
San Jose Police/Fire - Sprint

Location Yield
■ Phase I Calls
■ Phase II Calls

13 - Beginning Percentage
of Phase II Calls

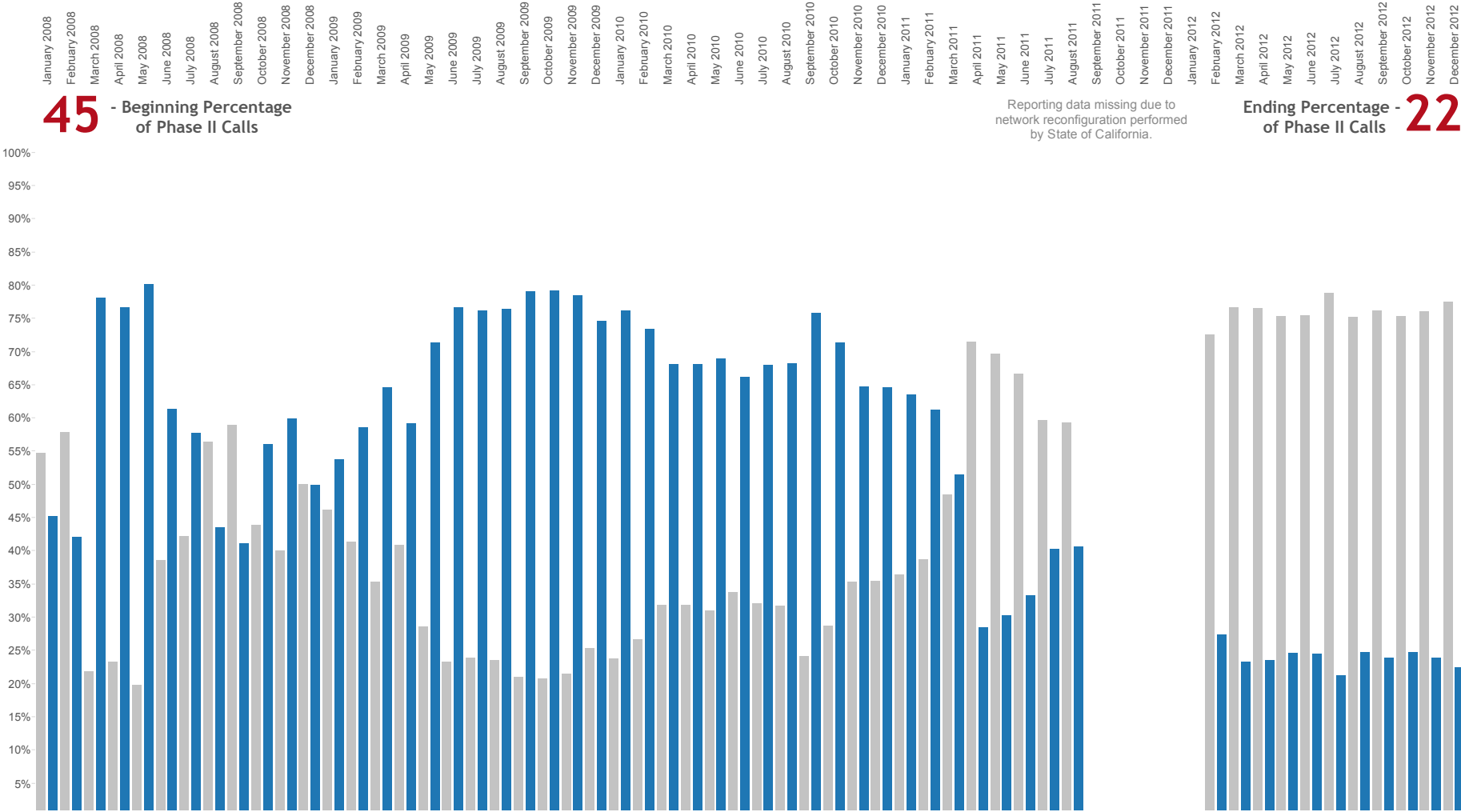
Reporting data missing due to
network reconfiguration performed
by State of California.

Ending Percentage - 39
of Phase II Calls



Phase at Call Termination for All 9-1-1 Wireless Calls Slide 3.4.4
San Jose Police/Fire - T-Mobile

Location Yield
■ Phase I Calls
■ Phase II Calls



45 - Beginning Percentage
of Phase II Calls

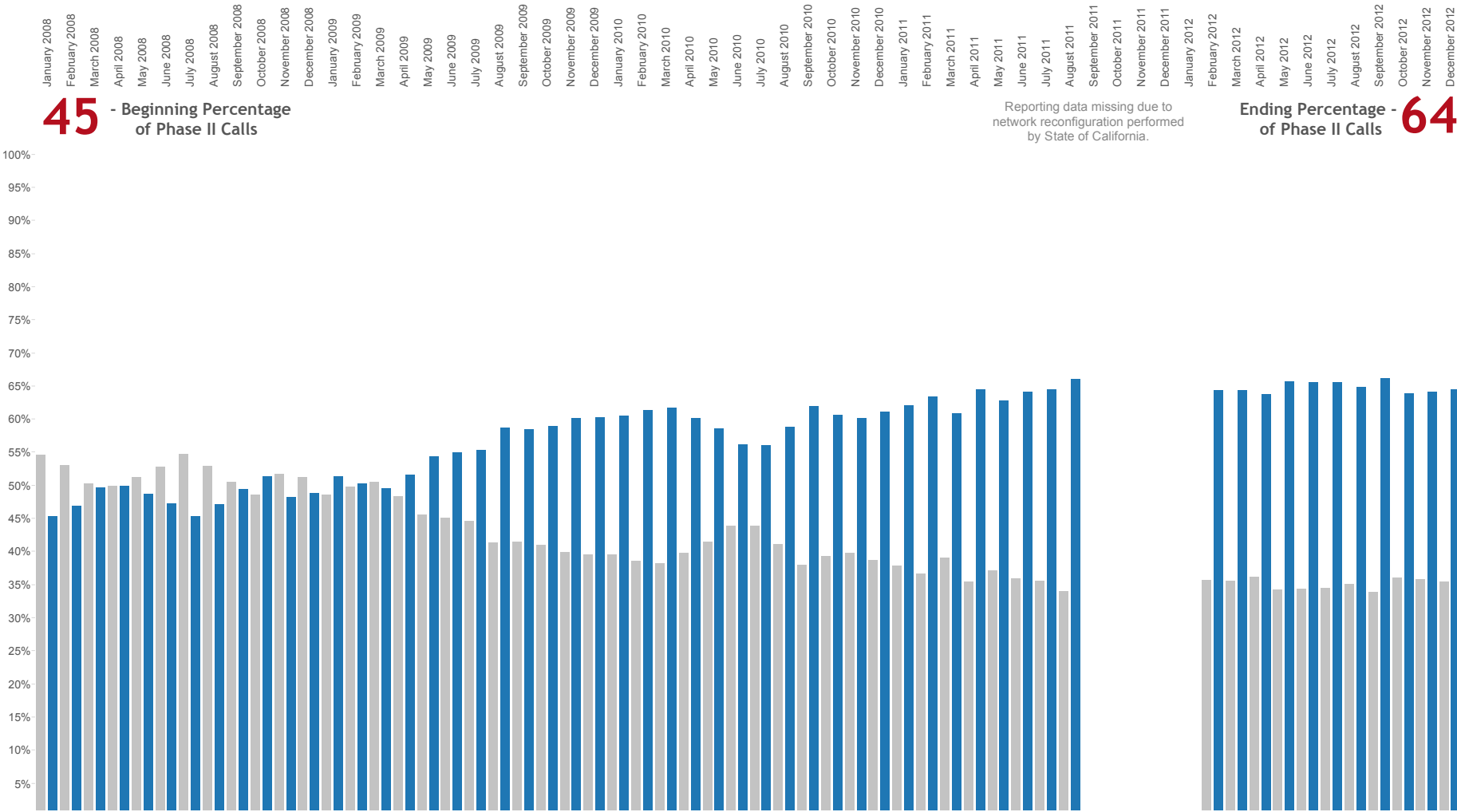
Reporting data missing due to
network reconfiguration performed
by State of California.

Ending Percentage -
of Phase II Calls 22



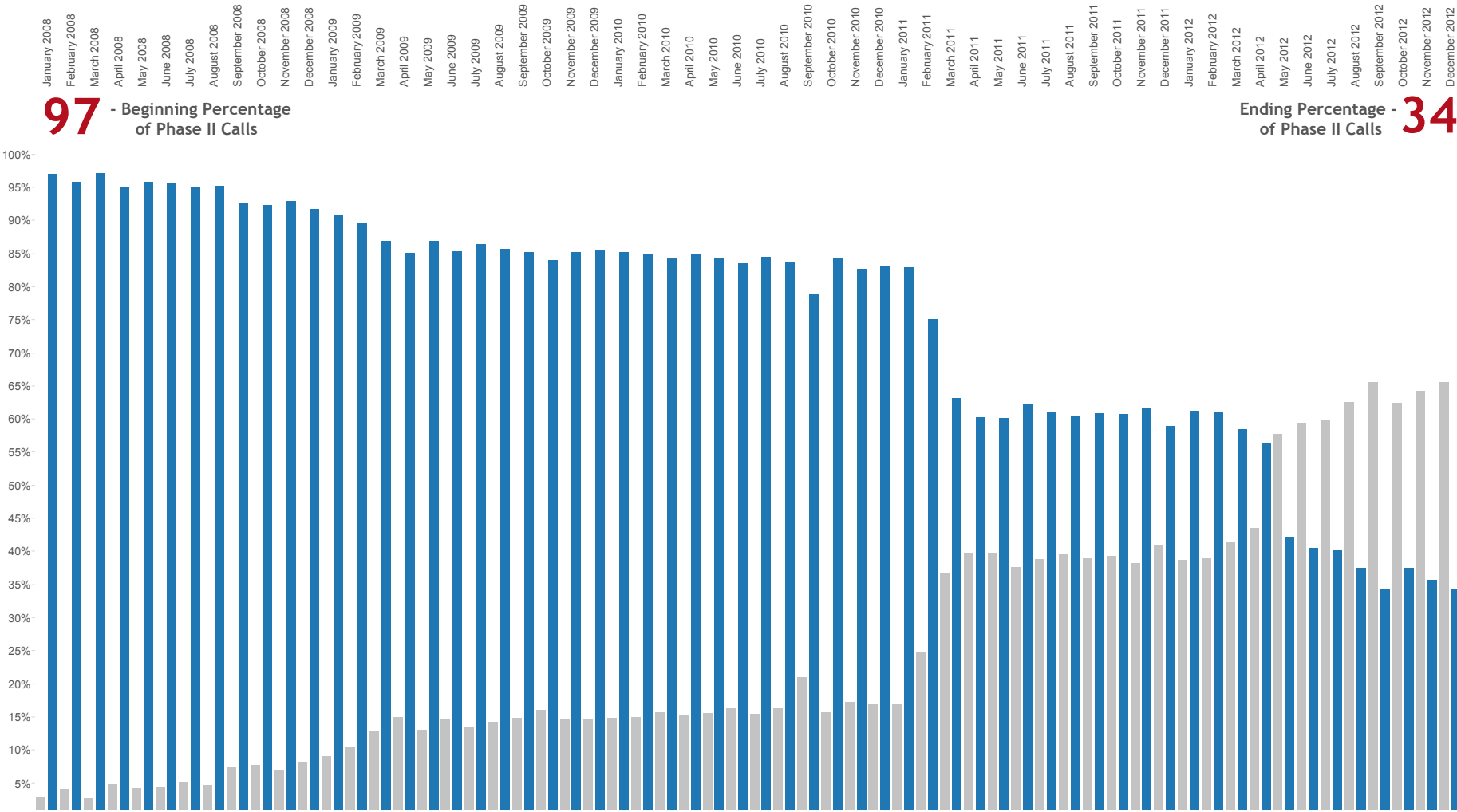
Phase at Call Termination for All 9-1-1 Wireless Calls Slide 3.4.5
San Jose Police/Fire - Verizon

Location Yield
■ Phase I Calls
■ Phase II Calls



Phase at Call Termination for All 9-1-1 Wireless Calls Slide 3.5.1
Ventura County SO - AT&T

Location Yield
■ Phase I Calls
■ Phase II Calls

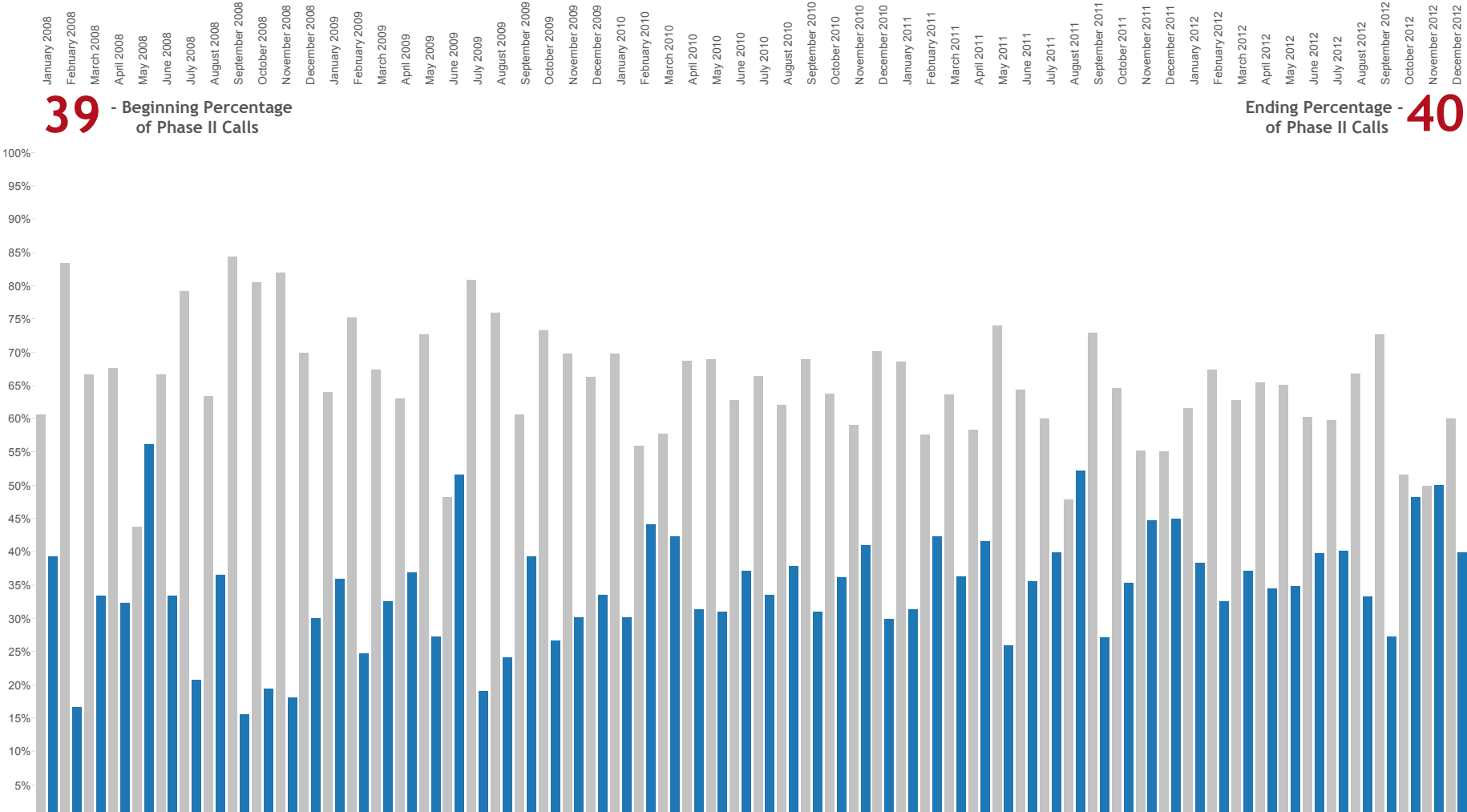


Phase at Call Termination for All 9-1-1 Wireless Calls Slide 3.5.2
Ventura County SO - Metro

Location Yield
■ Phase I Calls
■ Phase II Calls

39 - Beginning Percentage
of Phase II Calls

Ending Percentage -
of Phase II Calls 40

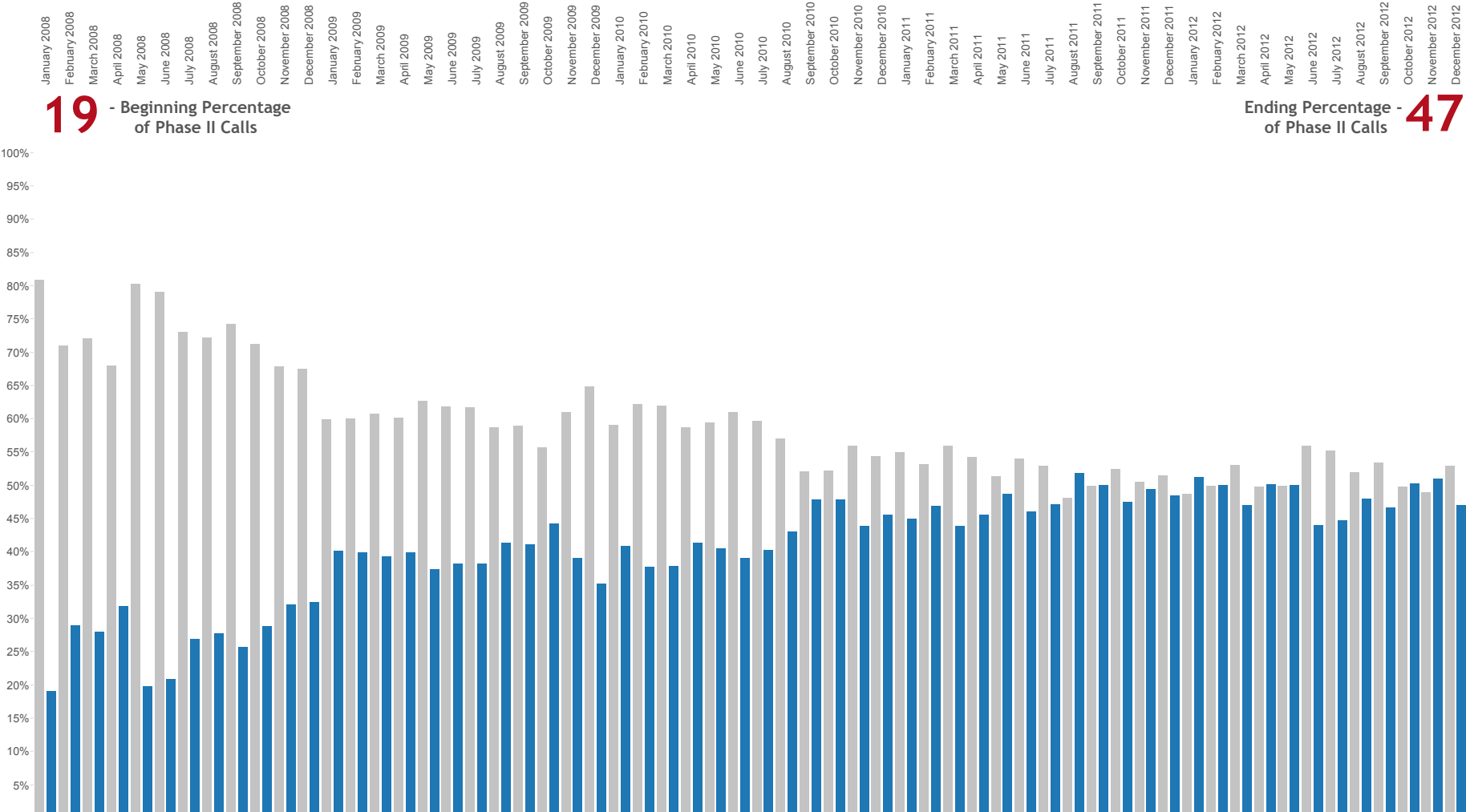


Phase at Call Termination for All 9-1-1 Wireless Calls Slide 3.5.3
Ventura County SO - Sprint

Location Yield
■ Phase I Calls
■ Phase II Calls

19 - Beginning Percentage
of Phase II Calls

Ending Percentage -
of Phase II Calls 47

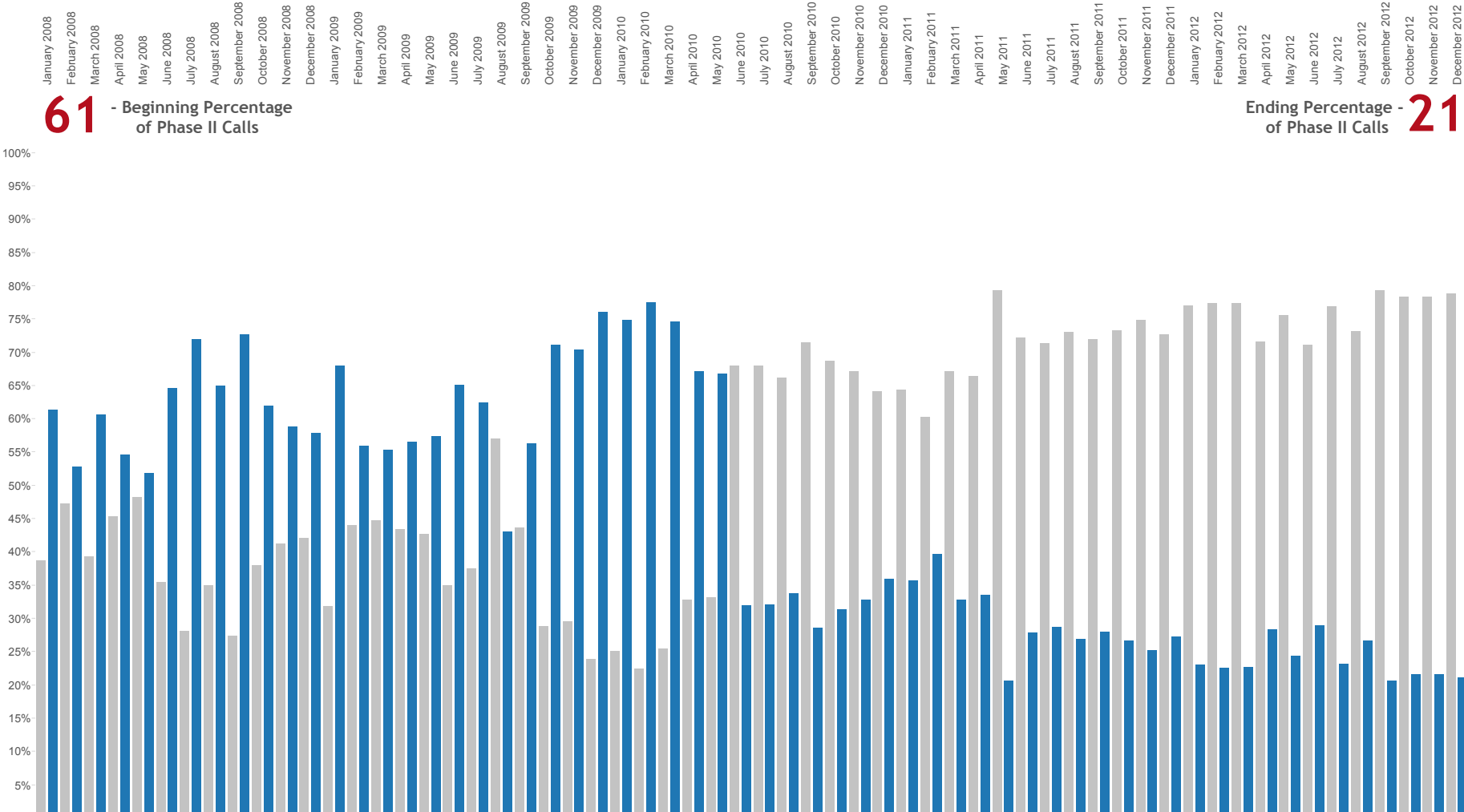


Phase at Call Termination for All 9-1-1 Wireless Calls Slide 3.5.4
Ventura County SO - T-Mobile

Location Yield
■ Phase I Calls
■ Phase II Calls

61 - Beginning Percentage
of Phase II Calls

Ending Percentage -
of Phase II Calls 21



Phase at Call Termination for All 9-1-1 Wireless Calls Slide 3.5.5
Ventura County SO - Verizon

Location Yield
■ Phase I Calls
■ Phase II Calls

